

REPLACEMENT OF THE LATERAL INCISOR

Surgical and prosthetic considerations

Prof. Stefen Koubi, 2017

case 2

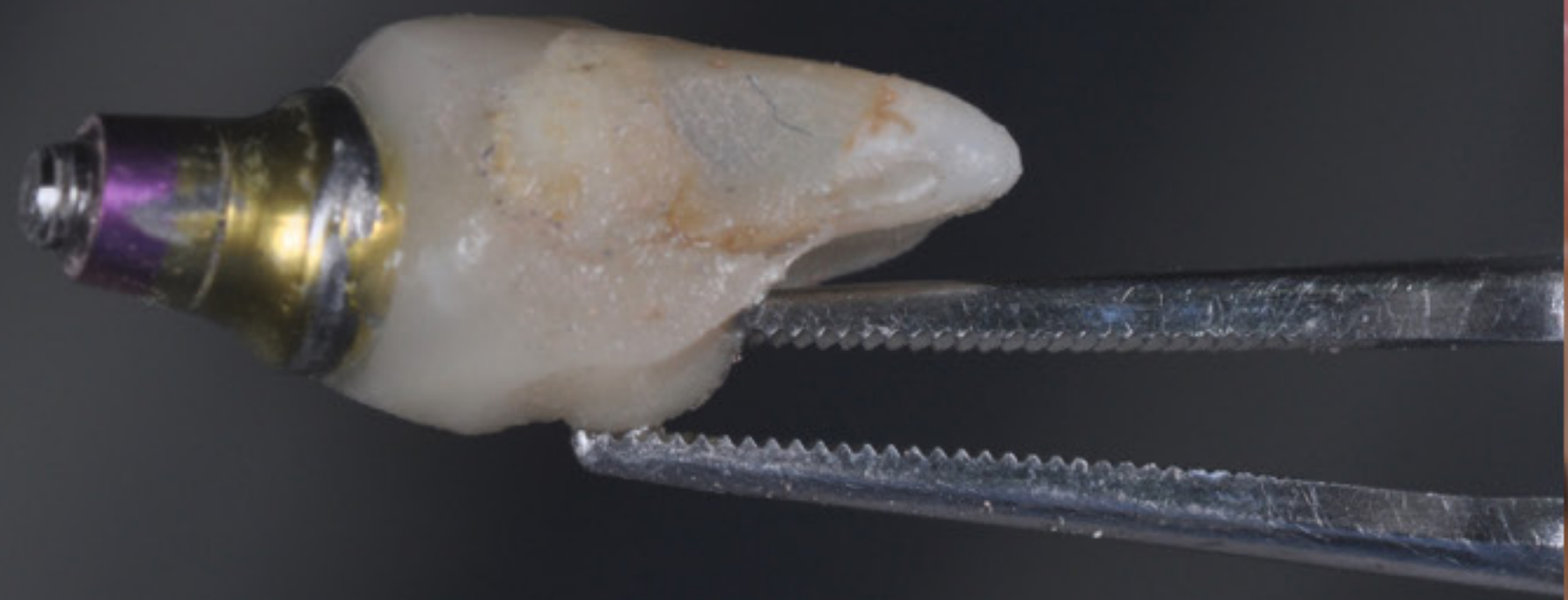
9.5 mm















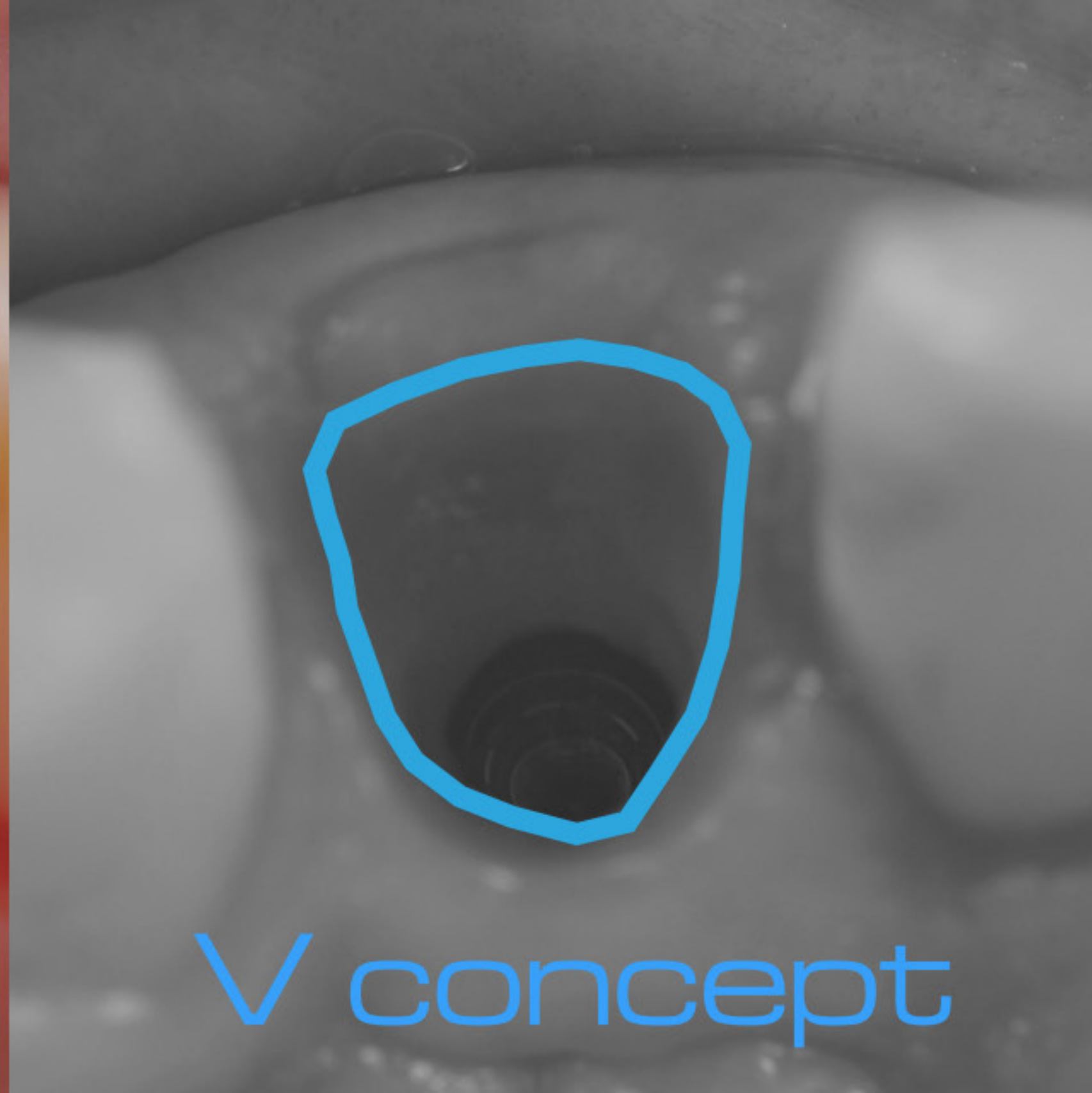


c o n v



e x i t y

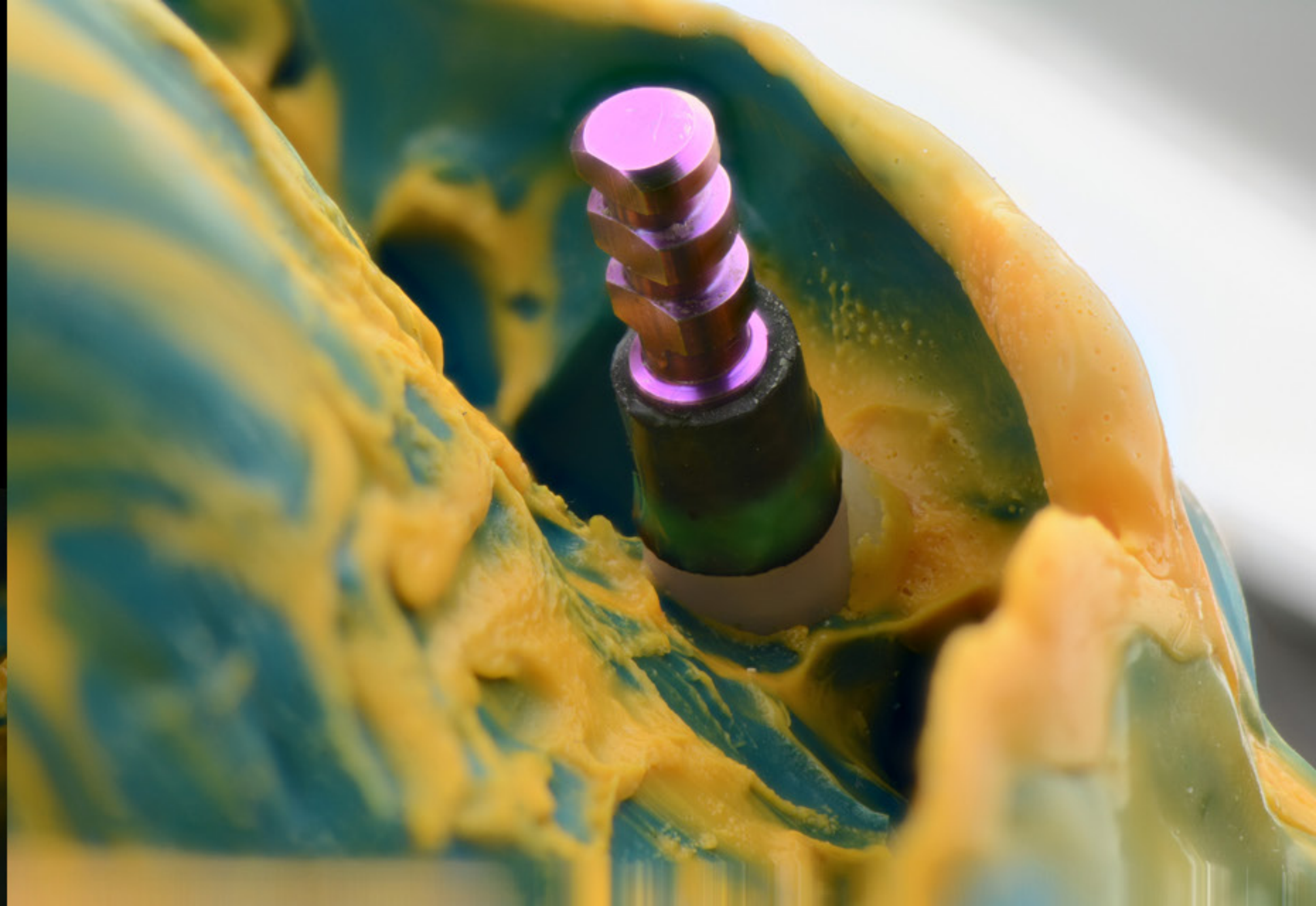




v concept











Criteria

for Prosthetic Options

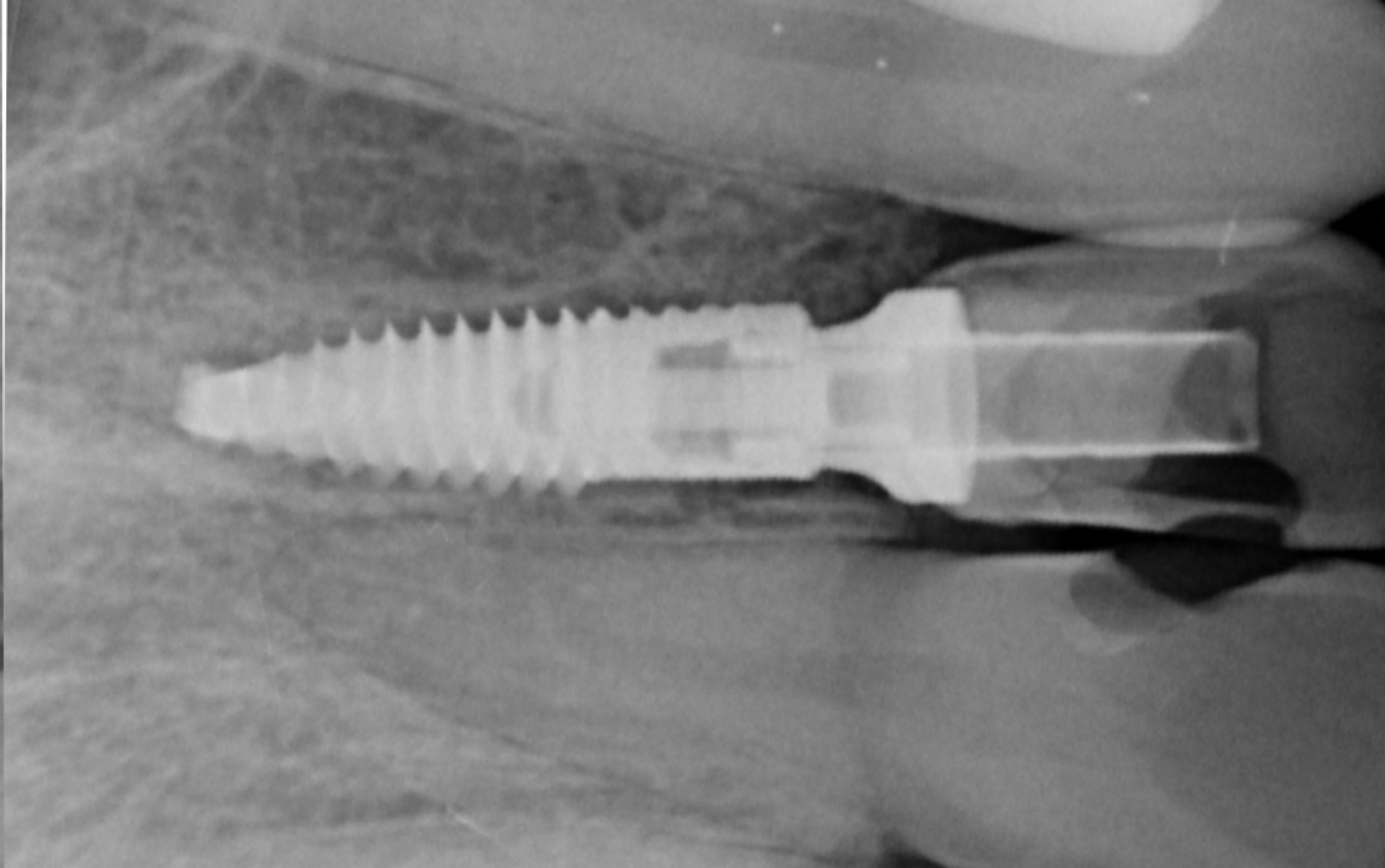
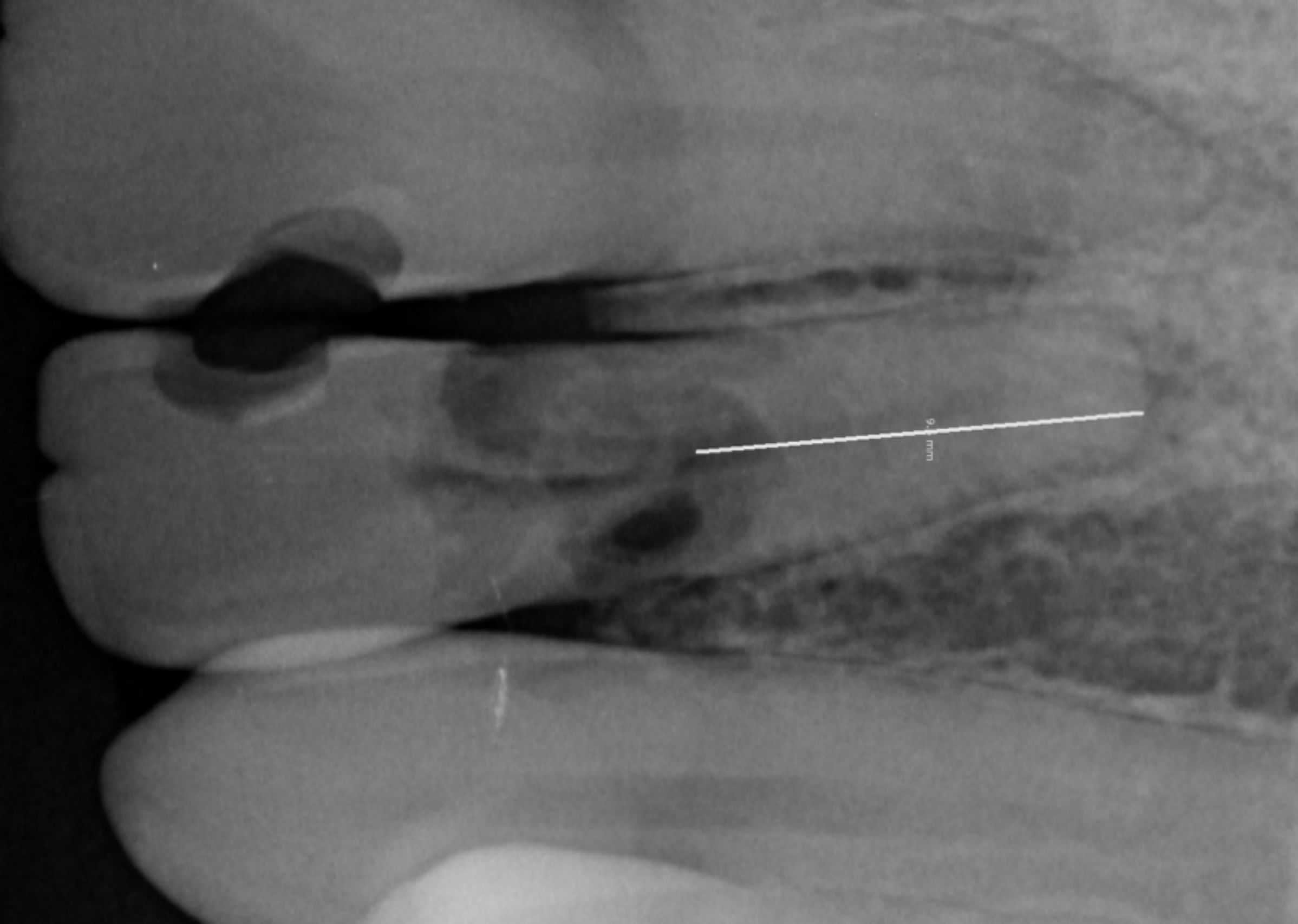
Implant axis : screwed or cement

Location : anterior or posterior

Type of connection (internal or external)

Patient expectation

Economic context/Lab technology



Preparing model with V3 replica

Preparation of a model with a V3 replica





TEXTURE





Selection of the
collar height of
the Ti base

the Ti base

Selection of the collar height of the Ti base



Galindo-Moreno , León-Cano , Ortega-Oller , Monje A3, Suárez , ÓValle , Spinato , Catena .

J Dent Res. 2014 Jul;93(7 Suppl):80S-85S.

Prosthetic Abutment Height is a Key Factor in Peri-implant Marginal Bone Loss. (cohort study)

MBL rates were higher for prosthetic abutment < 2 mm vs. ≥ 2 mm



Option



press



The image displays two dental implants side-by-side. Each implant consists of a purple, threaded titanium base and a white, ceramic crown. The crown has a natural, tooth-like shape with a central opening. The implant on the left is shown against a white background, while the one on the right is shown against a dark, textured background. The text 'emax press LT' is centered between the two implants, with '0,5 mm min thickness to mask Ti base' written below it.

emax press **LT**
0,5 mm min thickness
to mask **Ti** base

Option

2

zirconia



prefabricated zirconia abutment
cemented or not on Ti Base by [MIS](#)

Option

2

zirconia

2 ways

customised abutment +
cemented crown

press on zirconia

prefabricated zirconia abutment
cemented or not on Ti Base by [MIS](#)

Ti base for zirconia abutment



Standard Ti base





prefabricated Zir abutment
on Ti base



Wax
for Zir press



no fluorescence



Zir Liner



fluorescence



customised zirconia abutment

Fluorescence

DEEPDENTINE



ZrO_2

TRPN-DEEPDENTINE



DEEPDENTINE



TRANSPARENT-
DEEPDENTINE

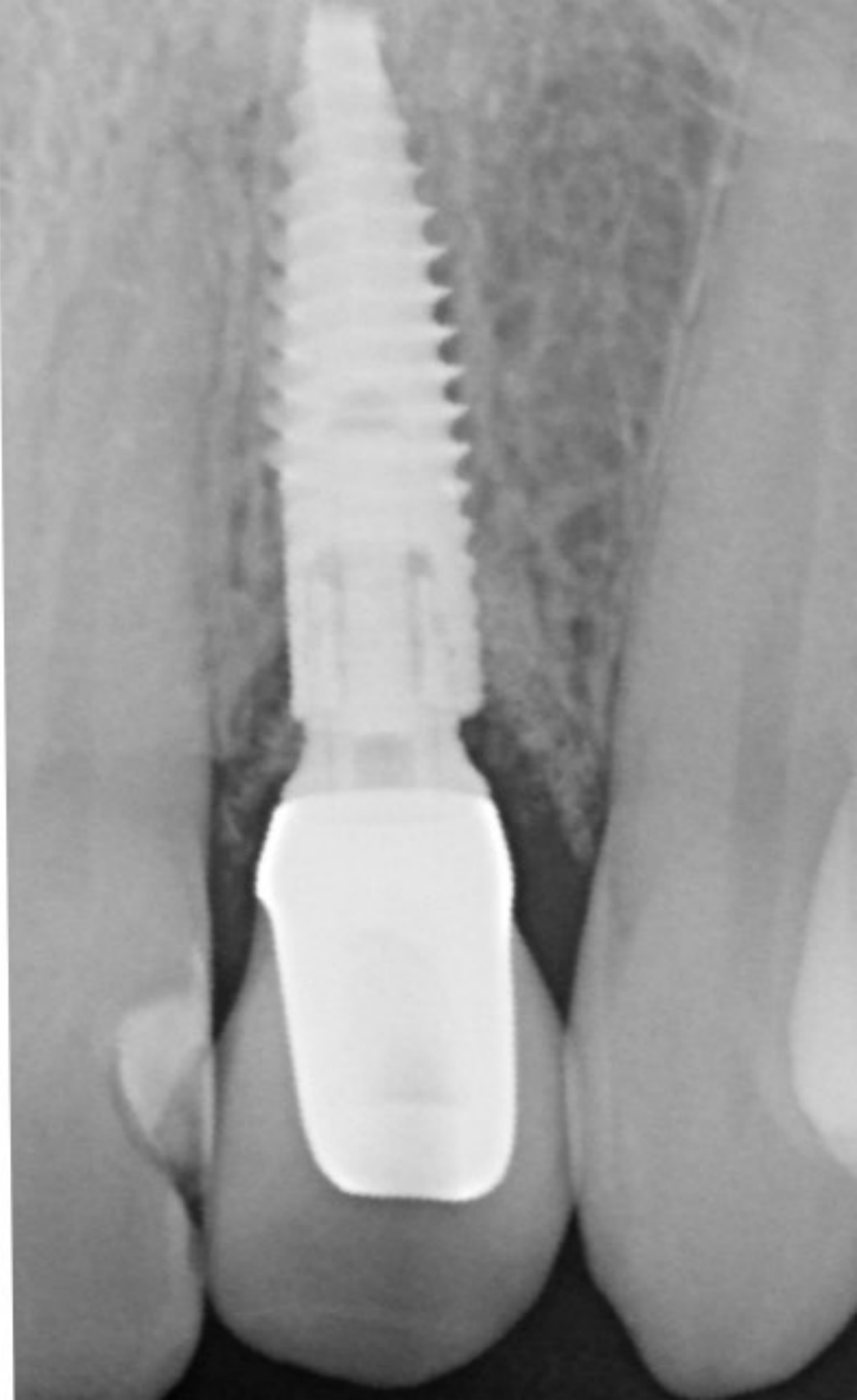


ZrO₂



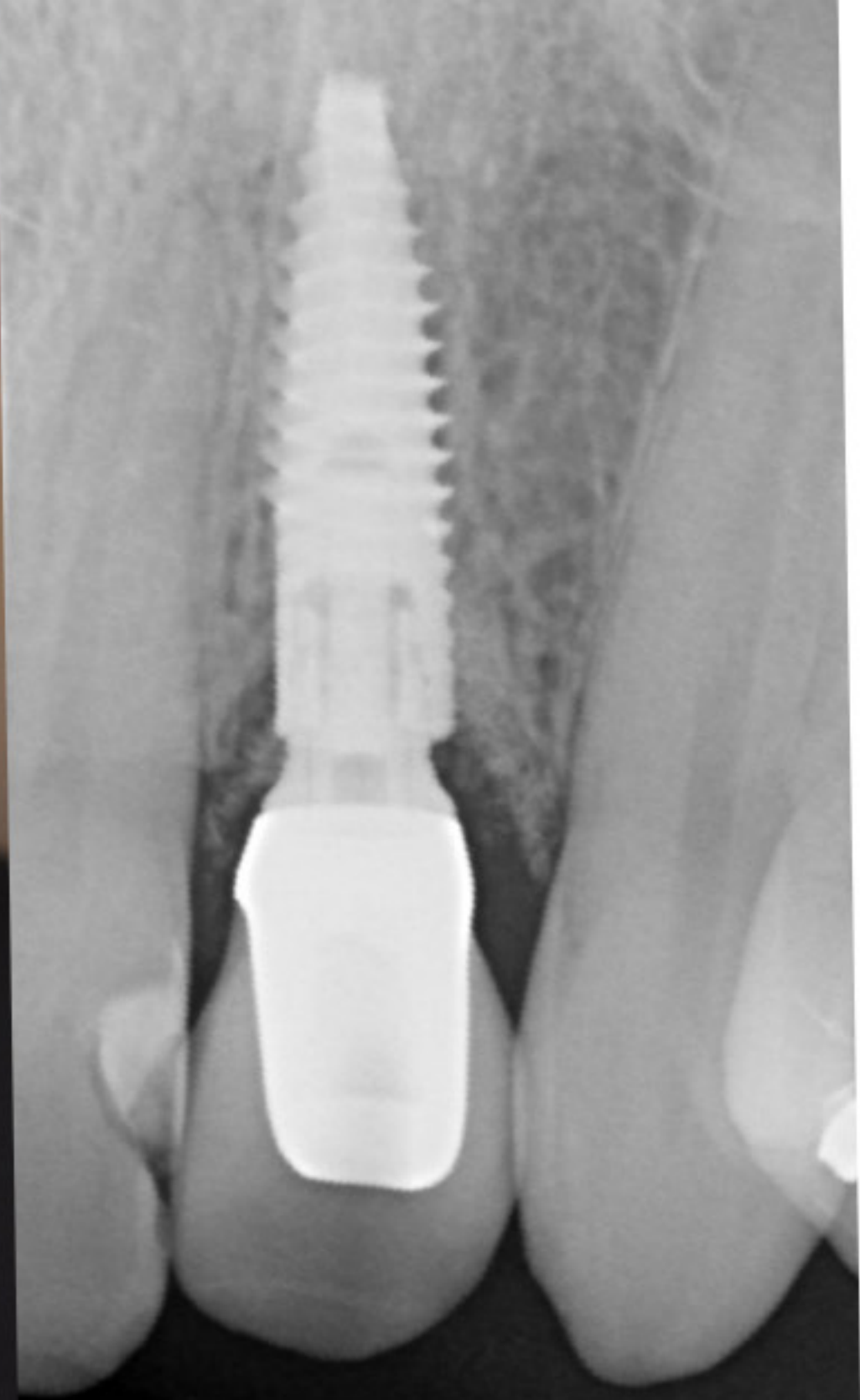
Zirpress

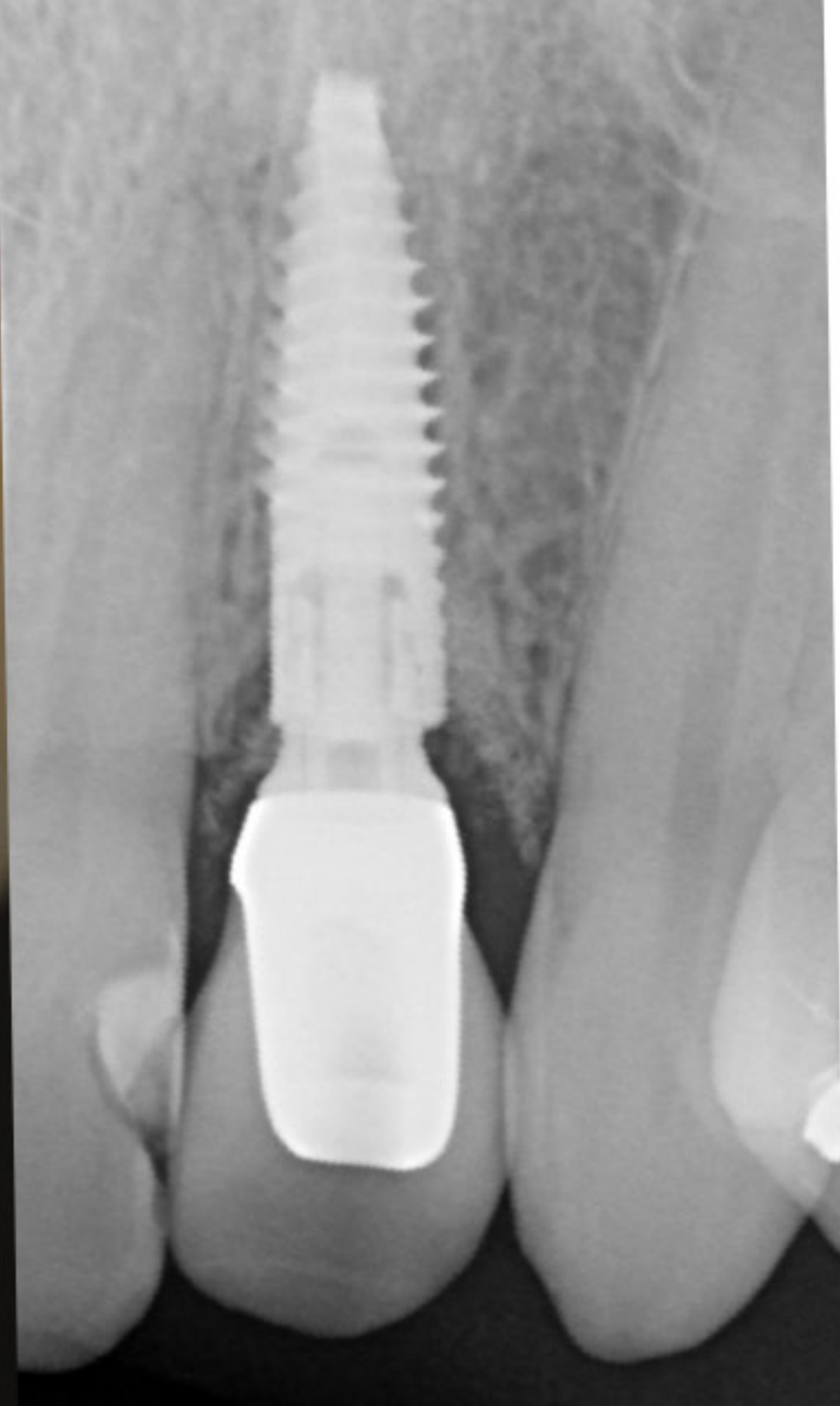
press on zirconia abutment





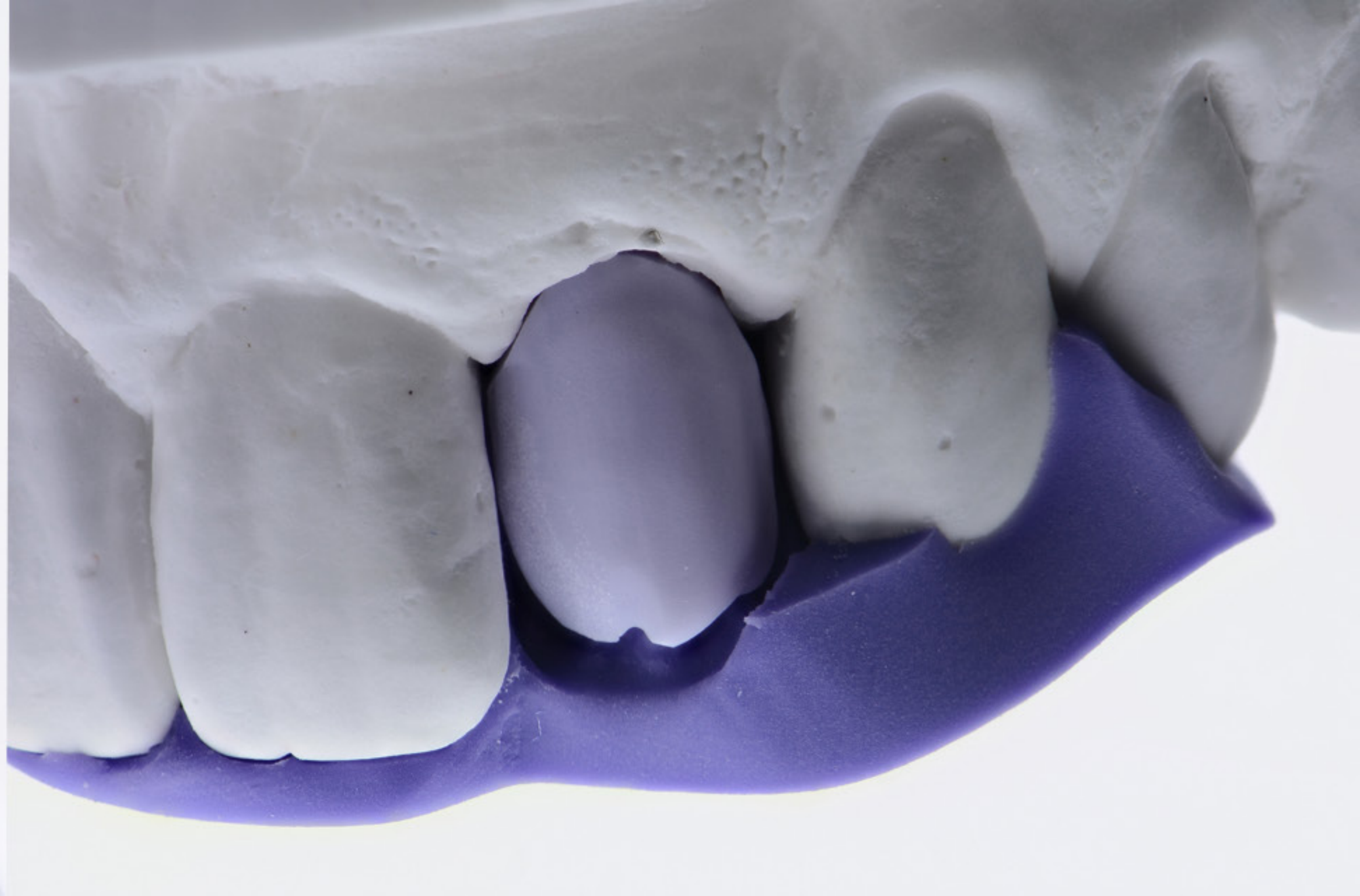
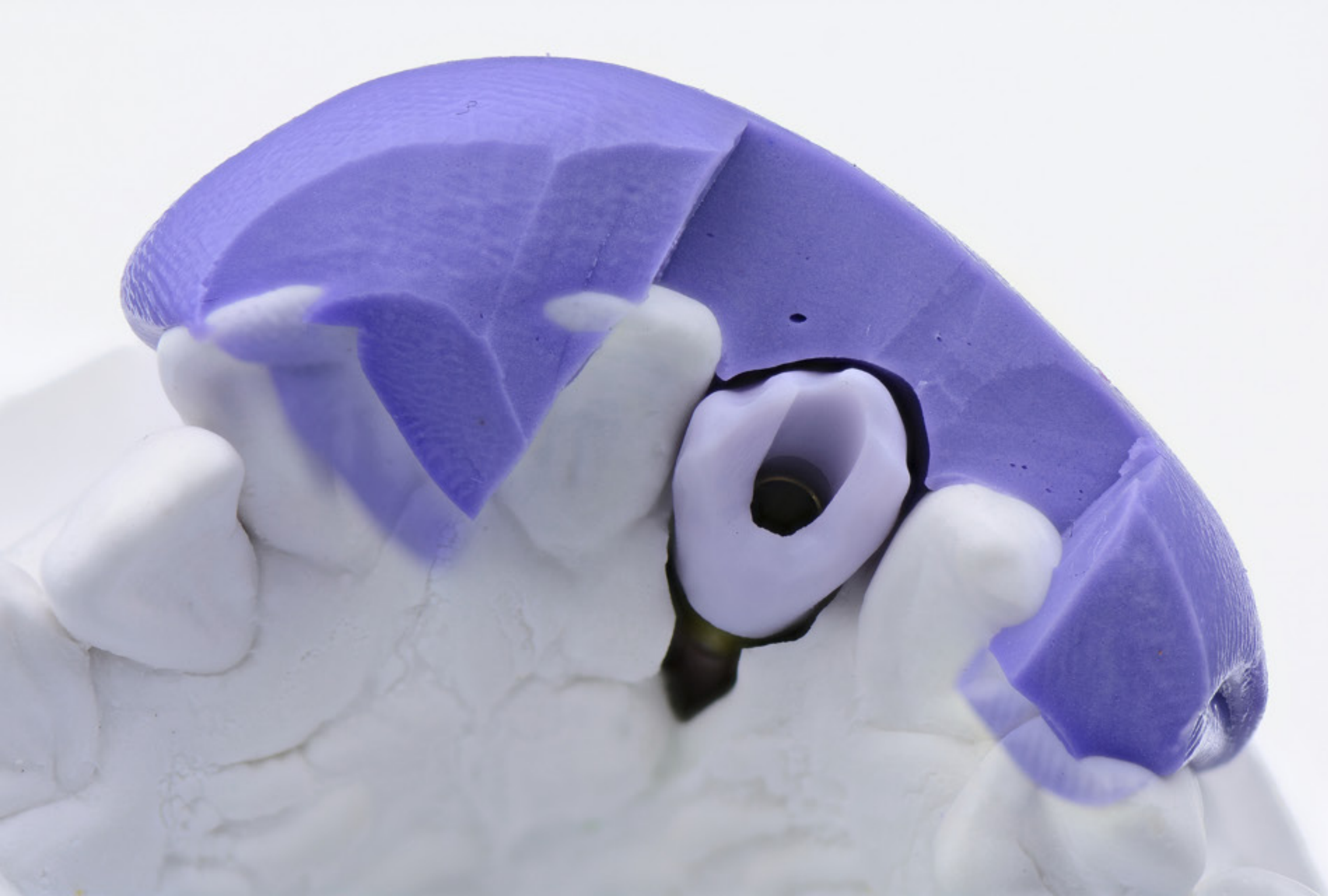
zirconia abutment with zirPress

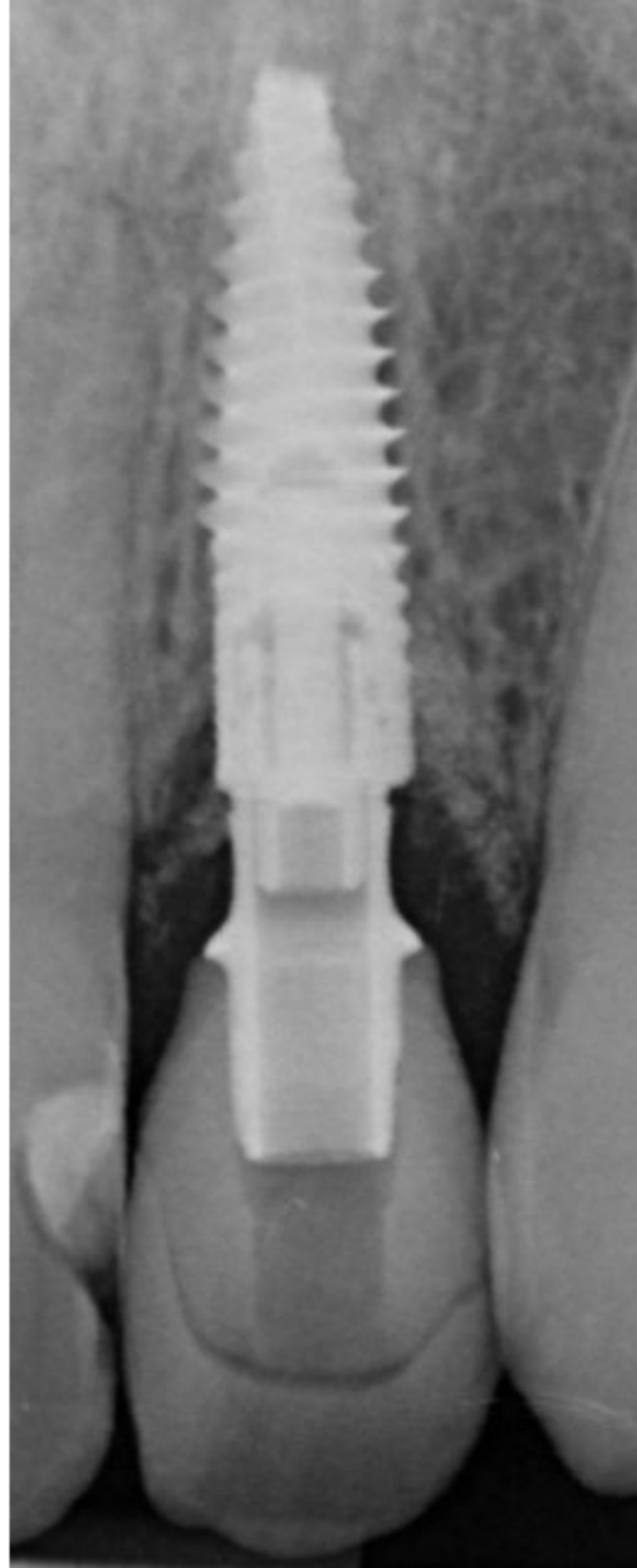




Option 3 DIGITAL

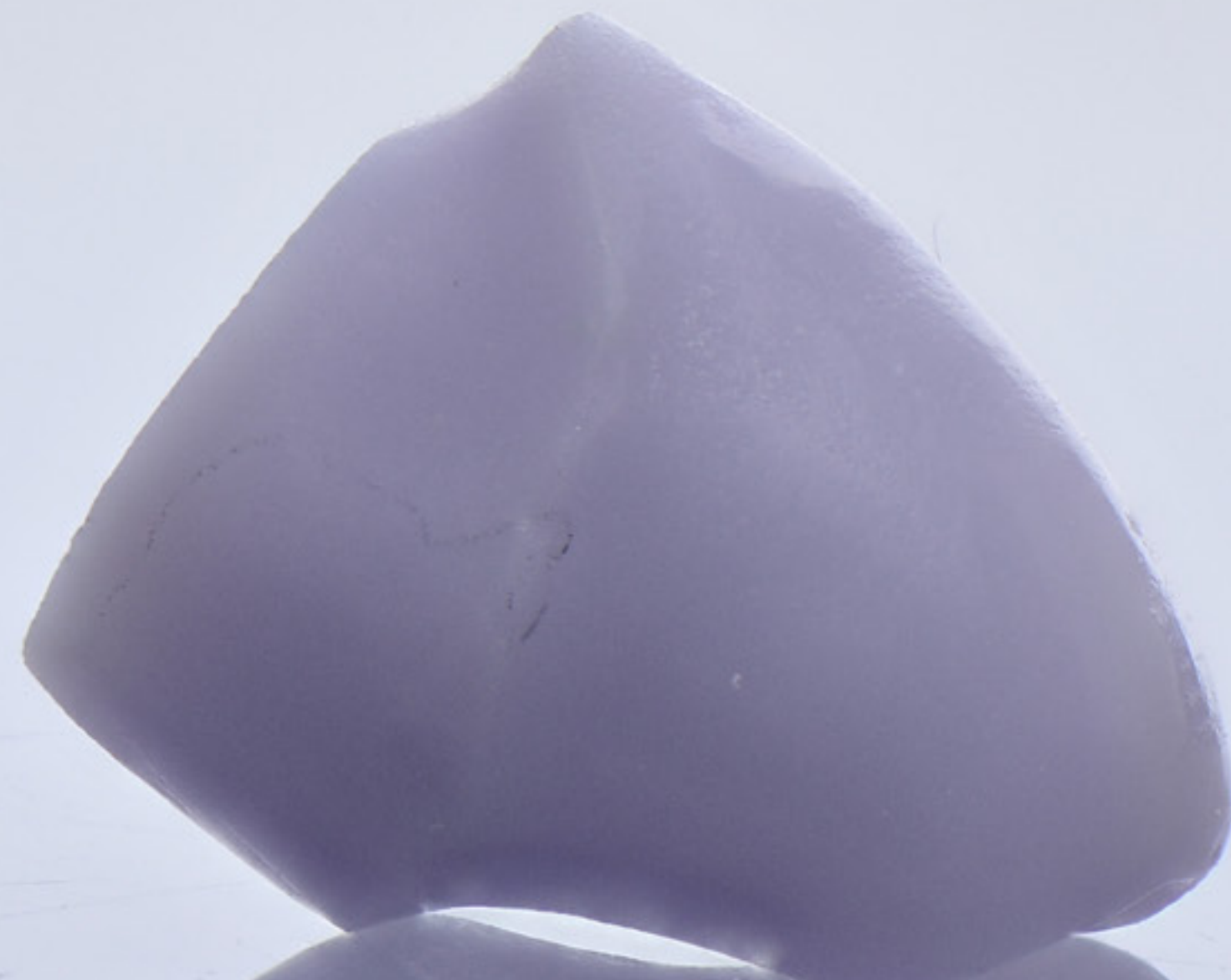




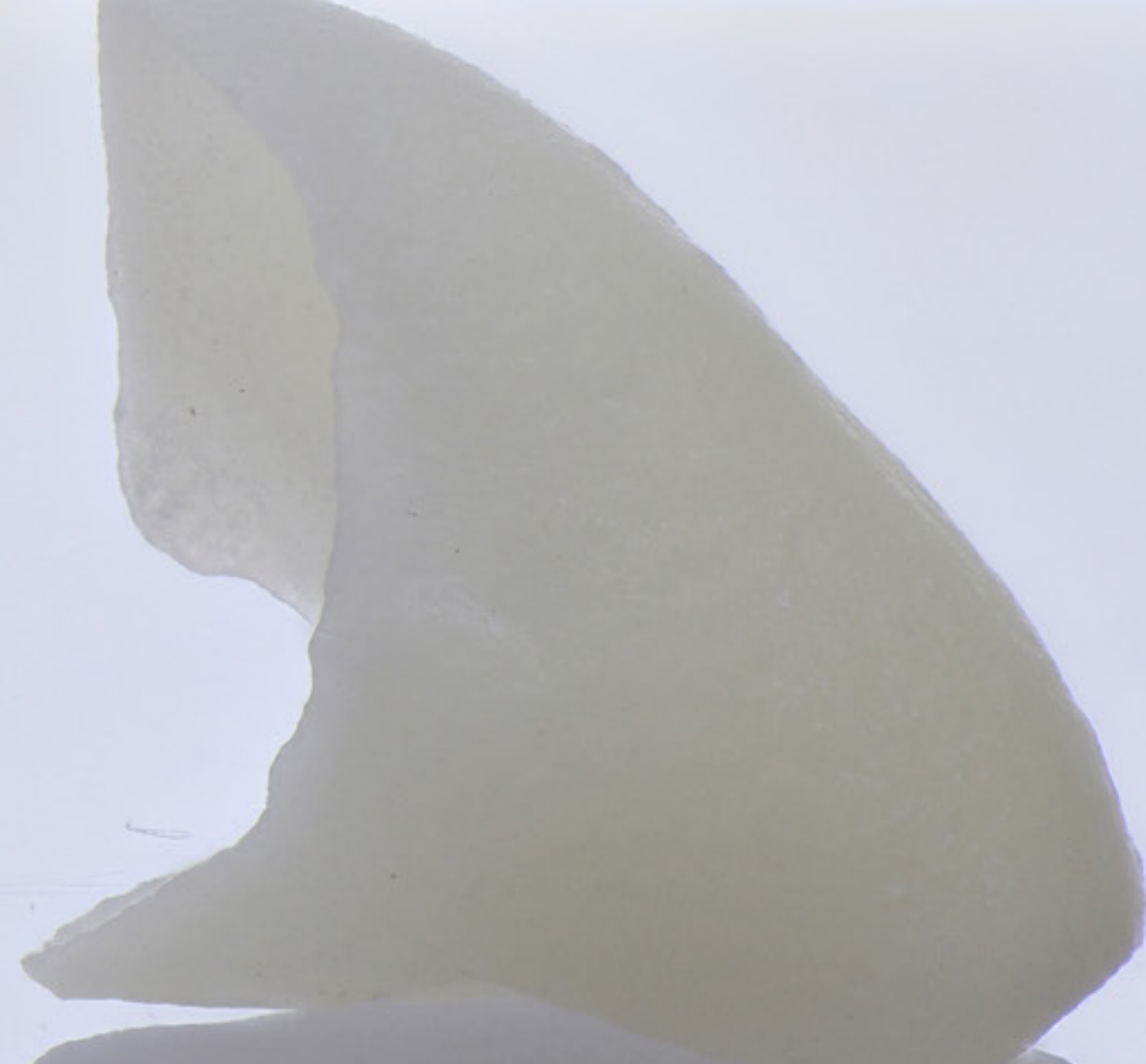




Ti base for V3



emax CAD LT
abutment



emaXpress LT
crown





20 N







texture



ceramist **Hilal KUDAY** CDT
ISTANBUL