

Dia Dent®

**COSMETIC
& RESTORATIVES**

DIAFIL CORE™ AUTOMIX**DUAL CURED CORE BUILD-UP COMPOSITE**

Dual-curing(Light and self-curing) core build-up and radiopaque two-component composite materials in Automix delivery system

**Benefits**

- Comfortable dispenser: Automix syringes deliver a correct and consistent mix on every uses
 - Easy and precise application with Automix and Intraoral tips
 - Dual curing: Light cure for 40 seconds or Chemical cure within 4 minutes
 - High compressive strength composite resin and long-term durability
 - Cuts and wears like dentin
- Superior bond strength with DiaPlus
Available 2 colors : Natural color(A3 shade) for the optimal esthetic results and Blue color

**Packages**

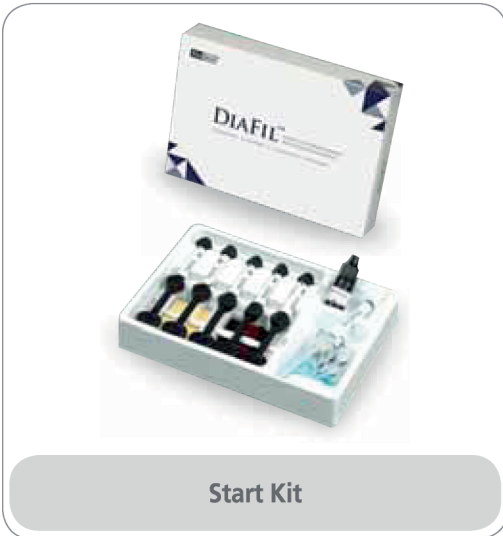
- **ITEM#2001-8101 Natural Color(A3 shade)**
 - 2 syringes of 9g
 - 10 Intraoral tips
 - 10 Automix tips



- **ITEM #2001-8109**
 - 20 Automix tips and 20 Intraoral tips

DIAFIL™ A LIGHT CURE, ESTHETIC RESTORATIVE MICRO HYBRID COMPOSITE RESIN

- Micro hybrid composite resin for use in Anterior and Posterior restorations



Start Kit

Benefits

- Unique fillers offer minimum polymerization shrinkage which helps reduce stress and sensitivity on the tooth potentially
- Has excellent fracture toughness, high tensile, compressive strengths for long lasting results
- Very easy handling of acceptable viscosity and good marginal adaptation
- Remarkable color stability and superior quality of esthetics
- High Level of radiopacity

Packages

• Start Kit

- 5 composite resin syringes (4g)
- 1 Bottle bonding agent(5ml)
- 1 Etching gel syringe(3ml)
- Accessories: 50 brush tips, 1 brush handle, mixing well, mixing pad, 10 disposable needle tips, shade sheet

Set	Composite Resin Shades	ITEM No.
START KIT A SET	A1, A2, A3, A3.5, B2	2001-1101
START KIT B SET	A2, A3, A3.5, B2, B3	2001-1102



Refill Package

• Refill Package

- 1 syringe x 4g

A1	2001-1201	B2	2001-1207
A2	2001-1202	B3	2001-1208
A3	2001-1203	C2	2001-1210
A3.5	2001-1204	C3	2001-1211
A4	2001-1205	A20	2001-1212
B1	2001-1206	A30	2001-1213



Capsule Type

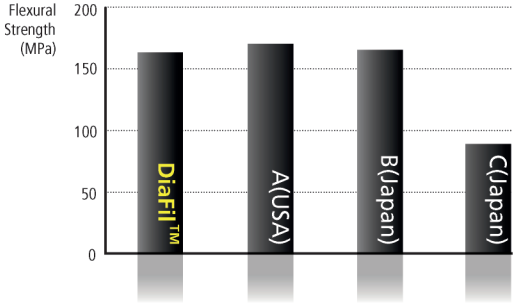
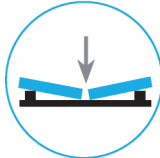
• Capsule Type

- 0.25g x 20 capsules

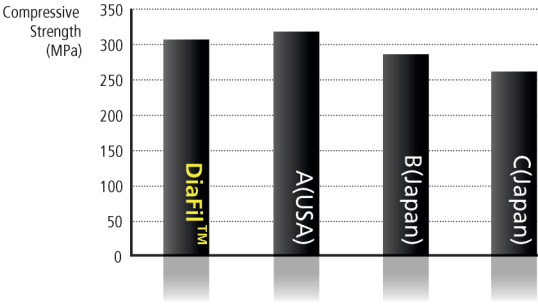
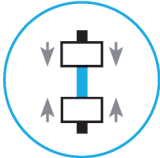
A1	2001-1405
A2	2001-1401
A3	2001-1402
A3.5	2001-1403
B2	2001-1404

PHYSICAL PROPERTIES

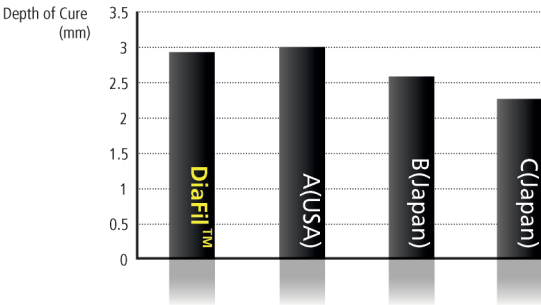
Flexural Strength



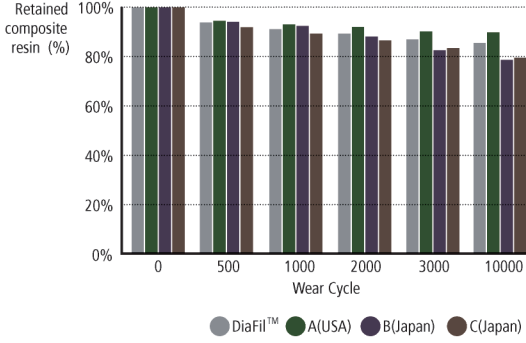
Compressive Strength



Depth of Cure



Abrasive, Wear Resistance



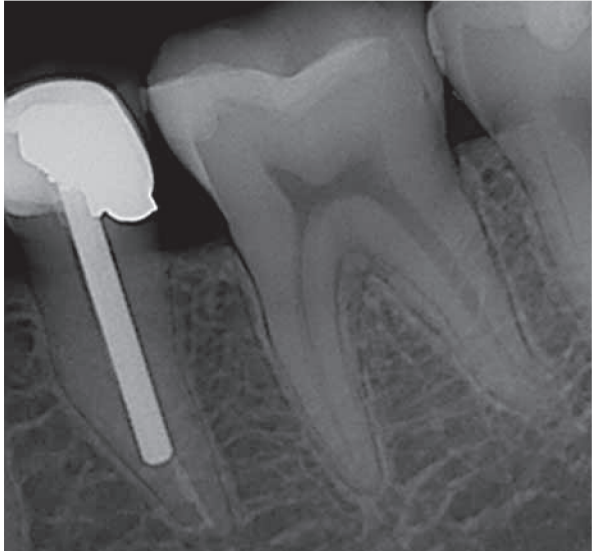
●POSTERIOR RESTORATION



●ANTERIOR RESTORATION



●HIGH RADIOPACITY



DIAFIL™ FLOW

LIGHT CURED FLOWABLE RESTORATIVE COMPOSITE RESIN

Flowable composite with very easy handling and high strength



Benefits

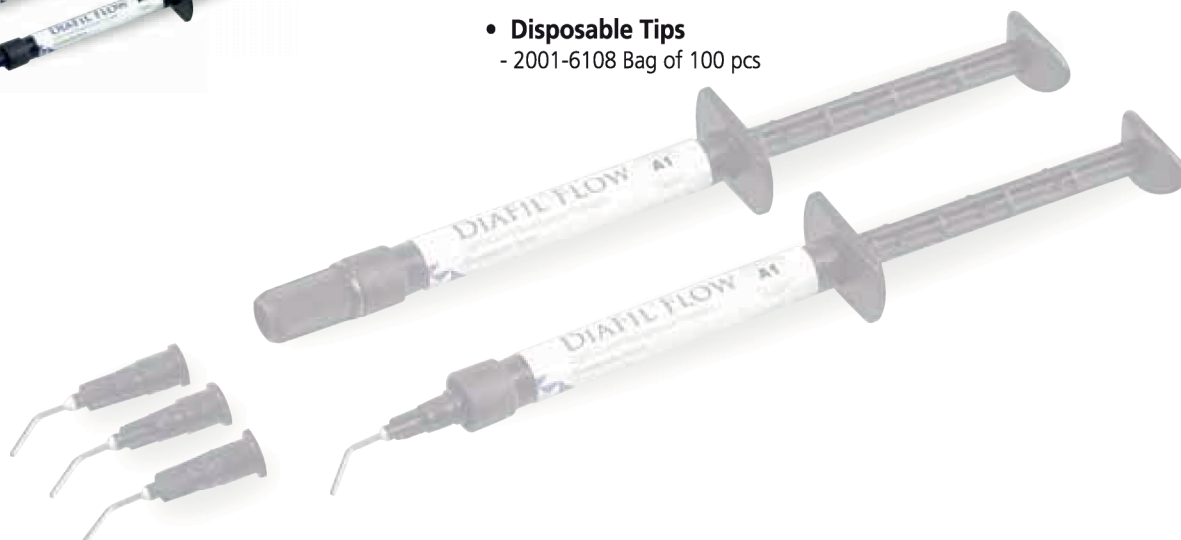
- Has a high level of fluoride release with no slump, run which helps a fast techniques and handling
- Enables to be used in various restorative procedures
 - : Class III, V and IV direct restorations
 - A liner for Class I, II
 - Pit & Fissure sealant where is required
 - Well suited for minimally invasive dentistry
- Excellent tensile strength and low shrinkage
- High radiopaque materials

Packages

- **Economic Package**
 - Flowable Resin 2g x 4 syringes
(Available shade A1, A2, A3, A3.5, B2, B3, C2)
 - 40 disposable tips(black)
 - Shade Sheet
- **Refill Package**
 - Flowable Resin 2g x 1 syringe
(Available shade A1, A2, A3, A3.5, B2, B3, C2, A20, A30)
 - 10 disposable tips(black)

SHADE	Economic Pkg.	Refill Pkg.
A1	2001-4101	2001-4201
A2	2001-4102	2001-4202
A3	2001-4103	2001-4203
A3.5	2001-4104	2001-4204
B2	2001-4105	2001-4205
B3	2001-4106	2001-4206
C2	2001-4107	2001-4207
A20		2001-4208
A30		2001-4209

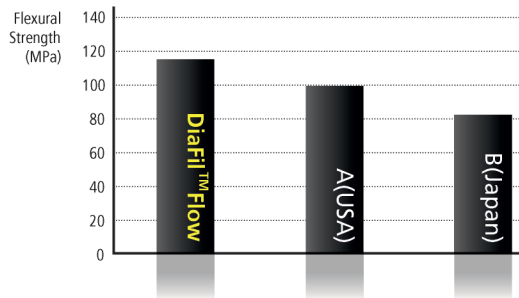
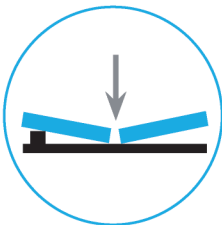
- **Disposable Tips**
 - 2001-6108 Bag of 100 pcs



PHYSICAL PROPERTIES

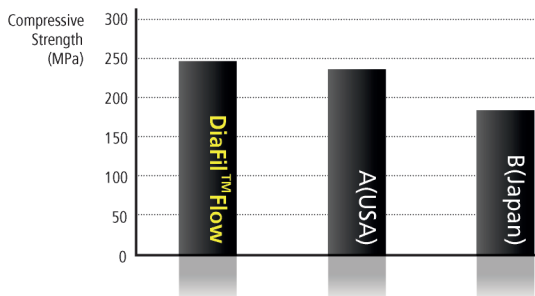
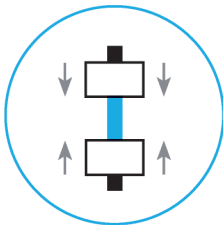
Flexural Strength

The flexural strength is measured by pressing a stick-typed experimental material. Flexural strength is the value obtained when the sample breaks, fixing both ends of sample and pressing in the middle of it. This test combines the forces found in compression and tension. DIAFIL™ FLOW shows statistically higher than other 2 brands.



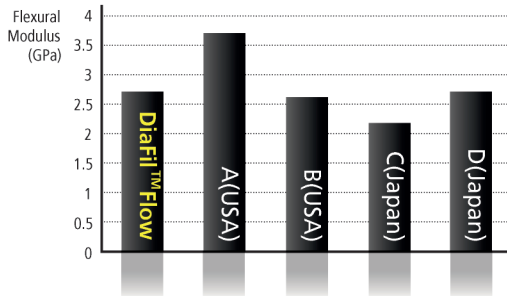
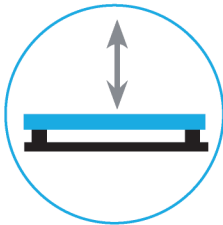
Compressive Strength

Compressive strength is particularly important because it is related with masticating forces. Rods are made of the material and simultaneous forces are applied to the opposite ends of the sample length vertically. The sample failure is a result of shear and tensile forces. DIAFIL™ FLOW is statistically higher than other brands.



Flexural Modulus

Flexural modulus is a method of defining a material's stiffness. A low modulus indicates high flexible material. DIAFIL™ FLOW shows a similar flexural elastic rate with other flowable composite resins.



●RESTORATION WITH DIAFIL™FLOW



DIAPLUS™

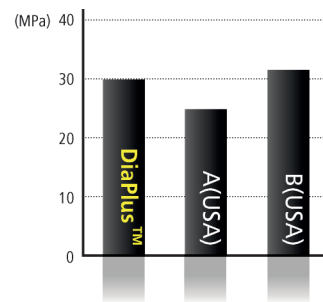
SINGLE COMPONENT BONDING AGENT

Recommended for all direct composite restorations, light-cured bonding procedures

Benefits

- High dentin, enamel bond strength performance
- Available in all classes of direct composite restoration
- Indirect restorations of Porcelain, Amalgam or Composite Repair after light curing with a minimal film thickness
- Ethanol-based bonding agent enables to maintain its exceptional bond strength

Shear bond strength(MPa)



Packages

- **ITEM #2001-2101**
- one-bottle bonding agent (1 bottle x 5ml)

DISPOSABLE BRUSHES

- Flexible adhesive tip allows restorations and small objects of all kind to be picked up, held, carried and placed quickly and easily



Size	ITEM NO.
Small	2001-6301
Medium	2001-6302
Large	2001-6303

(Pkg. of 100)



DIAPLUS™ G7

SINGLE COMPONENT SELF-ETCHING LIGHT-CURED BONDING AGENT

DiaPlus™ G7, the innovative 7th Generation bonding agent and offers superior and consistent bonding results on dentin and enamel with one bottle, one coat self-etching bonding agent system.

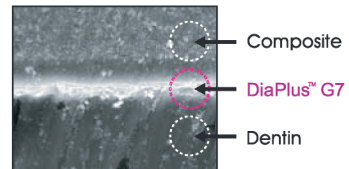


Benefits

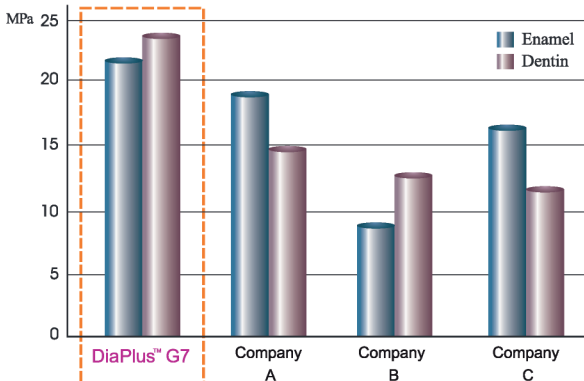
- Has **Etch, Desensitize, Prime and Bond** all with One-Bottle, One-Coat bonding system and no separate etching
- **Fast 3 Steps** (less than 35 seconds) reduces the risk of contamination
- Offer a **tight and long-lasting bond** between light-cured composite and both enamel and dentin by a highly advanced formulation whether wet or dry on dentin and enamel
- **Strong and tight bond** to dentin and enamel is offered by 4-MET monomer for adhesive to dentin and Phosphoric Acid Ester Monomer for superior bonding strength to enamel
- Consistent and **a long term bond strength** with the unique Nano-Filler
- Provide a very low risk of post-operative sensitivity
- **Remarkable thin bonding layer** less than 10^{µm} offers a frosty surface for much easier application of the first composite layer

Refill Package

- **ITEM #2001-2702**
- One bottle bonding agent (1 bottle x 5ml)

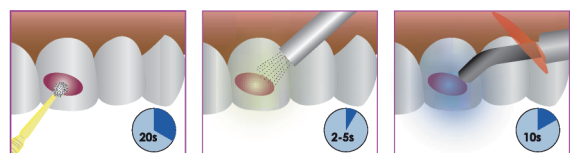


Thin Bonding Layer



Superior Bond Strength

- One coat, simple and fast bonding application



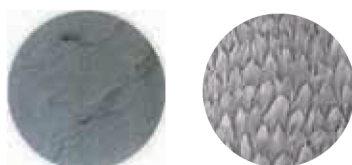
- 1** Apply Bonding Agent with scrubbing for 20 seconds.
- 2** Dry with high pressure air for 2-5 seconds.
- 3** Light cure for 10 seconds.

Less than 35 seconds

Technique Guide

DIAETCH™ 37%

A 37% ETCHING GEL PHOSPHORIC ACID



Before After
(Microphotographs of premolar, X1,000)

A phosphoric acid is used in etch enamel and/or dentin

Benefits

- Phosphoric acid etching of enamel and dentin with ideal thickness
- Quick and effective application to the desired place
- Enables to rinse completely and easily from the tooth surface
- High biocompatibility

Packages

Economic Package Type A

- ITEM #2001-3101 - 5 Syringes x 5ml and 20 disposable tips

Economic Package Type B

- ITEM #2001-3102 - 5 syringes x 3ml and 20 disposable tips

Refill Package Type A

- ITEM #2001-3202 - 1syringe x 5ml and 5 disposable tips

Disposable Tips

- ITEM #2001-6109 - Bag of 100 pcs.

DIASEAL™

A LIGHT CURE PIT & FISSURE SEALANT

Designed for sealing enamel pits and fissures of teeth to prevent caries

Benefits

- UDMA series monomer and Nano-filler offers high flowability, excellent wear resistance and strength
- Optimal viscosity to flow easily and helps for easy application
- Ensures hygienic and easy delivery and outstanding versatility
- High visual verification during application

Packages

Refill Package

- ITEM #2001-5201
- Sealant 1 syringe x 1.2ml
- 5 disposable needle tips



Properties

Mean value and standard deviation of micro-leakage score

Materials	Micro-leakage score (standard deviation)
DiaSeal™	1.0000(1.1094)
U	1.7333(1.4829)
M	0.9167(1.2795)

Thermocycling 500 times, 1% Methylene blue solution

Disposable Tips

- ITEM #2001-6110 - Bag of 100 pcs.

Endo-Clear™ WATER BASED EDTA ROOT CANAL CLEANSER

Endo-Clear™ is the EDTA root canal cleanser, colorless and clear without foreign matters and effectively cleans the canal and removes smear layer. Chelating effect of Endo-clear™ softens root canal wall, dissolves calcium and removes it.

Characteristics

- Debridement in the root canal
- Dissolution of pulp remnants
- Removal of smear layer
- Microbicidal treatment within the canal
- Water based type

Benefits

- Chelating effect of Endo-Clear™ make root canal wall softened and calcium dissolved.
- Easy to enlarge the canal and clean it.
- Endo-Clear™ perfectly removes smear layer.
- Superior microbicidal treatment within the canal
- Excellent dissolution effect of pulp remnants
- Being based on water, more easier to get to apical area where hard for cream type to reach. So it effectively removes smear layer around apical area better than cream type.



Packages

Regular Package

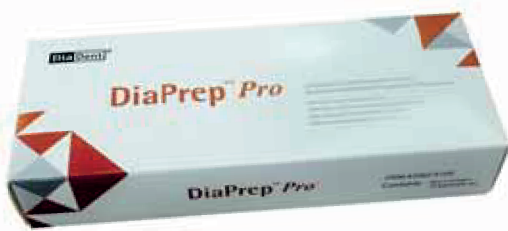
ITEM # 2002-5001 Regular Package

**EDTA 17% Solution 100 ml x 1
Dia-Flex (=Irrigation syringe) x 1
Disposable tips x 3
EDTA 17% Solution 100 ml x 1**

ITEM # 2002-5002 Refill Package

DIA PREP™ Pro EDTA ROOT CANAL PREPARATION CREAM **NEW**

EDTA Cream with Urea Peroxide, used as an irrigation agent for chemo-mechanical preparation of the root canal.



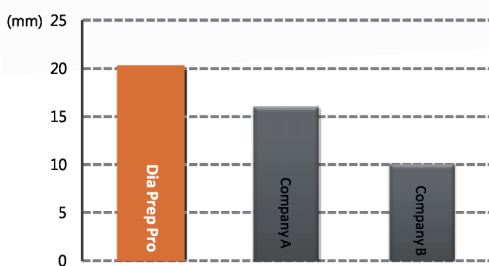
Characteristics

- Debridement in the root canal
- Dissolution of pulp remnants
- Removal of smear layer
- Facile movements of canal instruments
- Microbicidal treatment within the canal
- Clearance of dentin tubules and apical area

Benefits

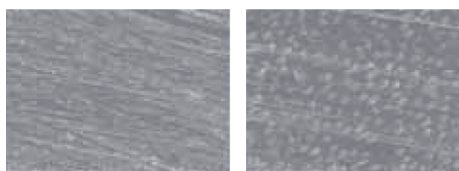
- Offers better smear layer removal, EDTA removes smear layer, softens dentin and facilitates the removal of calcific obstruction.
- Urea Hydrogen Peroxide reacts with Sodium Hypochlorite to produce oxygen bubbles that flush out debris within the canal.
- The lubricant medium facilitates instrument movement within the canal to eliminate instrument binding or breakage.
- Unclogged dentin tubules and apical area permit better penetration of root canal medicaments and fillings.
- Provides rapid cleansing and enlarging of canals due to EDTA which softens walls and smooth calcium deposits.
- Easier placement into canals than liquids.

Flowability



- This test is measured as ISO6876 regulations after the setting time and condition in the laboratory(R&D DiaDent2017)

Excellent Smear Layer Removal



Before

After

Packages

- NEW** • ITEM # 2002-4100 - 2 syringes of 6g, 10 disposable tips
- ITEM # 2001-6119 - 10 Disposable tips.

D-LUX

CORDLESS LED CURING LIGHT



D-Lux is a new advanced cordless LED curing light. Made from the highest quality aluminum, D-Lux dissipates heat quickly to prevent overheating problem so that it can produce the maximum light intensity safely and consistently.

Features

- **OLED panel** : unique and advanced one-button control
- A high intensity of **1,600 mW/cm²** offers extremely short curing times of no more than **5 seconds**
- Cordless, highly portable and lightweight (only 155g)
- Unique ergonomic design: provides comfortable grip and easy-to-read OLED panel
- Durable one-piece aluminum design is robust and easy to disinfect
- High-performance lithium-ion battery technology:
 - A new fully charged battery provides 160 x 10-second cures
 - OLED panel conveniently indicates battery life and a countdown timer for the next needed charge
 - Battery can be fully recharged in 90 minutes
- **5 versatile curing modes** for every indications
- Easy to change the battery pack

Package

- **ITEM #4004-1001 Regular Kit**
 - D-Lux Handpiece & Charger
 - Accessories: Light Guide(11x11mm), Power Supply and Cord Plastic Protector,

Device Part Codes

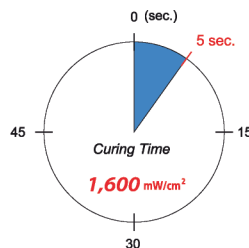
- **ITEM #4004-1110 Handpiece**
- **ITEM #4004-1120 Charger**
- **ITEM #4004-1130 Light Guide (11 x 11mm)**
- **ITEM #4004-1150 Battery Pack**
- **ITEM #4004-1160 Plastic Protector**
- **ITEM #4004-1170 Power Supply (Adapter)**
- **ITEM #4004-1171 Power Cord**

Product Features

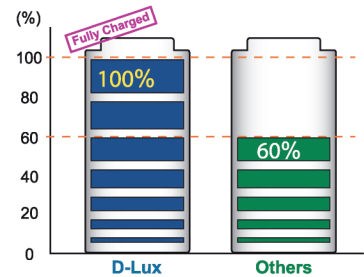
Simple & Intuitive OLED Button



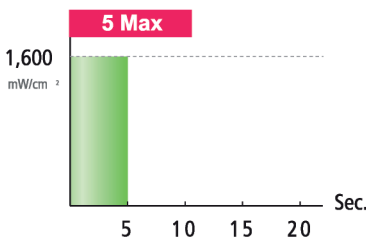
High Intensity Output



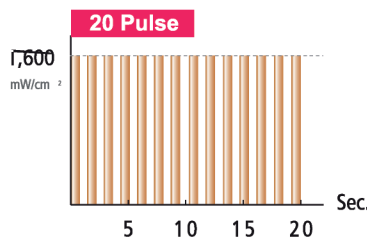
Fast Charging System (90min)



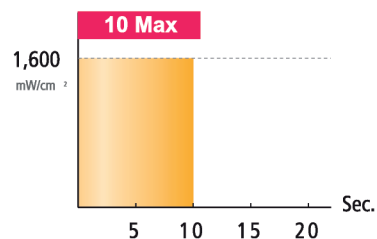
5 Curing Modes



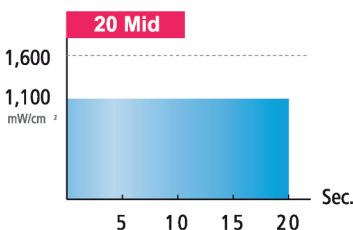
5 Max:
Maximum light intensity output for 5 seconds



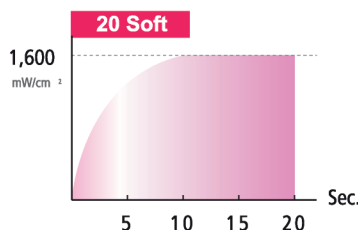
20 Pulse:
Pulses every 0.15 seconds for 20 seconds at maximum light intensity



10 Max:
Maximum light intensity output for 10 seconds



20 Mid:
70% output of maximum light intensity for 20 seconds



20 Soft:
An initial 10% output of maximum light intensity that gradually increases to full power in 10 seconds, followed by 10 seconds output at full power

