

- PSPIX<sup>2</sup>  
SYSTEM
- Resolution .....20 lp/mm
  - Scan Time (fast mode)..... 1.6s - 2.7s
  - Scan Time (high definition mode) .....2.1s - 3.6s
  - Connection.....Ethernet RJ-45
  - Dimensions.....L. 154 x D. 204 x H. 193mm
  - Weight ..... 2.6kg
  - Operating voltage.....100 - 240V ~ 50 - 60Hz

SOPIX SOPIX<sup>2</sup>

- SIZE 1
- External dimensions.....25 x 39mm
  - Active surface area .....600mm<sup>2</sup> (20 x 30mm)
  - Number of pixels ..... 1.50millions
- SIZE 2
- External dimensions.....31 x 42mm
  - Active surface area .....884mm<sup>2</sup> (26 x 34mm)
  - Number of pixels ..... 2.21millions

	X MIND DC	X MIND unity
Classification	Electromedical equipment, Class 1, type B	
Supply voltage	115/230V - 50/60Hz	100 - 240V - 50/60Hz
Power absorption at 230 V	1.4kVA	0.85kVA
X-ray tube	New Toshiba DG 073B	Toshiba D-041 5
X-ray tube voltage	60-70kV	60kV / 65kV / 70kV
Anode current	4 - 8mA	7mA
Focal spot	0.7mm	0.4mm
Total filtration	Equivalent to 2 mm Al at 70kV	> 1.5mm Al at 70kV
Leakage radiation	< 0.25mGy/h	
Technology	DC	High frequency DC
Timer	from 0.02 to 3.2 seconds	from 0.02 to 2 seconds
Weight of the head	5.5kg	6 kg
Total weight	25kg	23 kg
Accessories	Second control button with remote exposure switch RX indicator light for external use Adaptable mounting wall plate	Circular cone Ø60mm Rectangular cone 45x36mm Arm extension Sopix inside / Sopix <sup>2</sup> inside Remote exposure switch

MORE INVENTIVE  
LESS INVASIVE

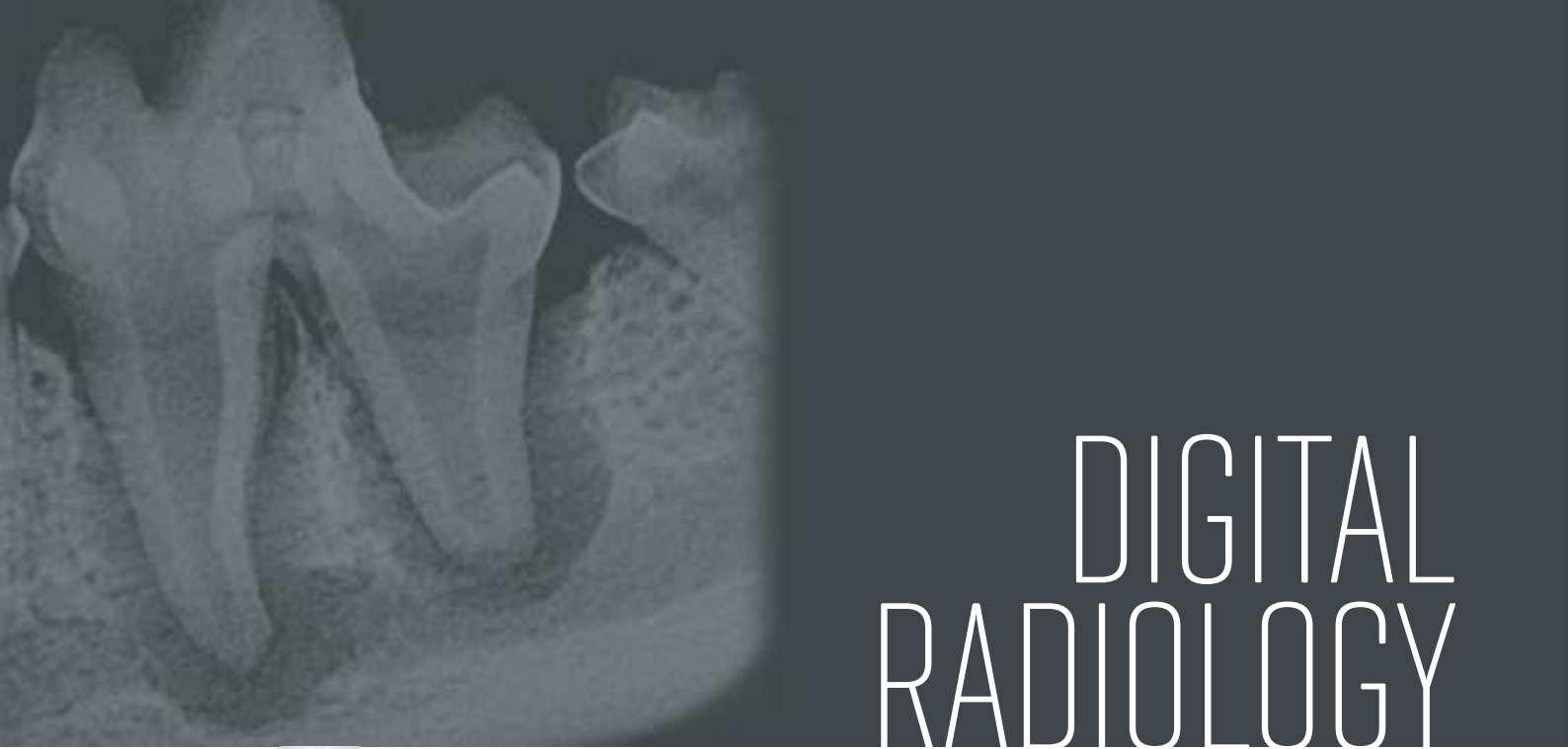
ACTEON® is a pioneer, manufacturer and global leader in digital medical imaging and high-frequency ultrasonics, with its headquarters in France and distribution in 94 countries.

ACTEON® has strived to play a leading role in building a link between human and veterinary medicine, particularly dentistry, in order to improve standards of animal care.



- IMAGING PLATES
- Dimensions IP Size 0 ..... 22 x 35mm
  - Dimensions IP Size 1 ..... 24 x 40mm
  - Dimensions IP Size 2 ..... 31 x 41mm
  - Dimensions IP Size 3 ..... 27 x 54mm
  - Dimensions IP Size 4 (3 x IP Size 3) ..... 69 x 54mm

- SYSTEM
- Technology ..... CMOS + scintillator+ optic fiber
  - Pixel size ..... 20 x 20µm
  - Theoretical resolution ..... 25lp/mm
  - Connection ..... USB 2.0
  - Total cable length for SOPIX<sup>2</sup>/SOPIX ..... 3.70m
  - Sensor cable length for SOPIX<sup>2</sup> INSIDE/SOPIX INSIDE ..... 0.70m



DIGITAL  
RADIOLOGY



Diagnose Dental  
and Stomato Pathologies  
with Precision



Solutions for  
higher standards  
of care





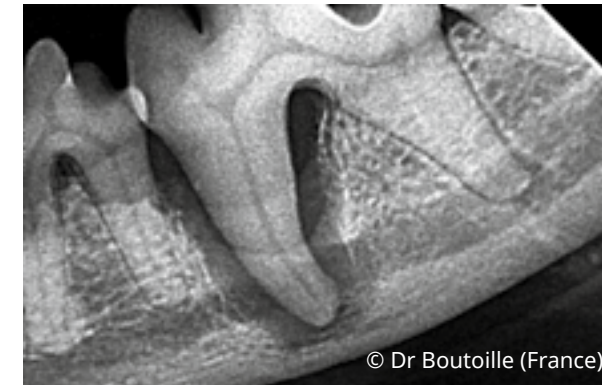
# FIND WHAT YOU COULD NOT SEE

## FACILITATE YOUR SURGERY

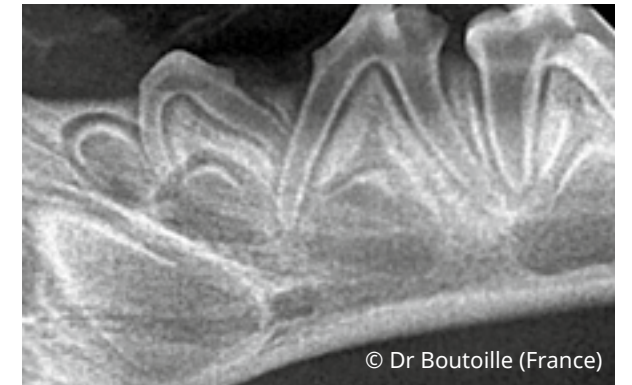


▶ X-Ray leads to incidental findings in 42% dogs with no clinical lesion ◀

Near pathological fracture



Dental burgeon detection in puppies



© Dr Boutoille (France)

© Dr Boutoille (France)

▶ 80% dogs, 70% cats develop dental disease by the age of 3 ◀

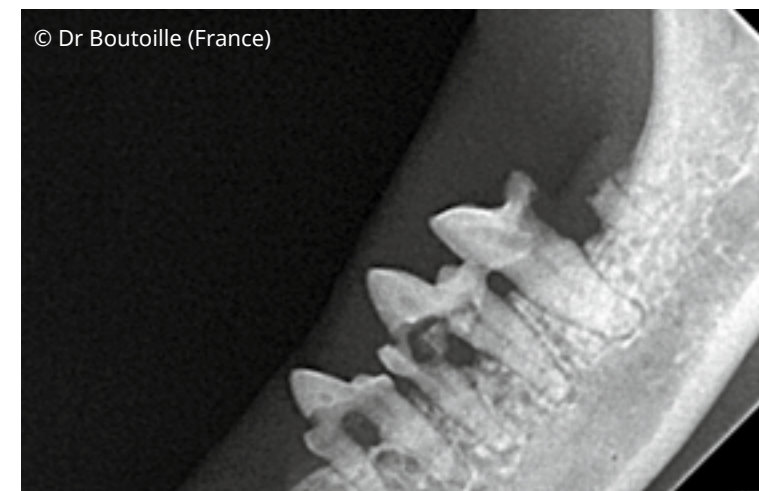
Cat periodontal disease



© Dr Boutoille (France)

▶ X-Ray reveals root fragment in 80% cats with missing tooth ◀

© Dr Boutoille (France)





# X MIND

# MULTIPLE CONFIGURATIONS

## FLEXIBLE INSTALLATION

## ALTERNATIVES FOR YOUR PRACTICE



X MIND DC  
Top Wall Mounted

The X-Mind® can accomodate any operatory configuration.

3 arm lengths are available:

- 0.40m
- 0.80m
- 1.10m

and can be:

- Top wall mounted
- Bottom wall mounted



31cm (12") long cone



X MIND  
unity  
Bottom Wall Mounted

You can singlehandedly position and stabilize your generator.  
Movement is fluid and is done without any effort or stress.  
The anti-vibration and anti-movement mechanism ensures drift free positioning during an exposure.



X MIND DC  
Mobile



X MIND  
unity  
Mobile



## ERGONOMIC AND SIMPLISTIC



- A CLEAR AND LARGE SCREEN to easily see the main parameters at a distance
- Display THE PARAMETERS kV, mA, type of film and ACE selection (Sopix® inside)
- "MEMORY" FUNCTION allows modifying for the pre-programmed exposure times to adapt to the specifications of your sensor or film  
THE DOSE IS DISPLAYED when simultaneously pressing the buttons "-" and "+"
- Selection of the ANIMAL MORPHOLOGY little dog/cat and dog
- THE EXPOSURE PARAMETERS are adjusted according to the type of tooth
- SELECTION OF THE EXAM TYPE

X MIND  
unity

## FLUIDITY AND STABILITY



Rotation made easier



© Advetia

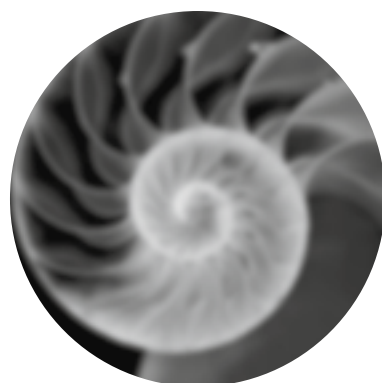




# X MIND

# PERFECTION MEETS PROTECTION

## HIGH QUALITY REQUIREMENTS



The generator focal spot Y: 0.7mm



The generator focal spot of X-Mind™ unity: 0.4mm

A sharp and contrasted image

The X-Mind unity has a 0.4mm focal spot. It has several configurable radiological settings.

Notably:

- The anodic voltage (60, 65 and 70kv)
- The anodic current (from 4 to 7mA)

These parameters ensure a sharp and contrasted images

X-Mind® tubes are located at the back of the head which gives the patient better protection because the distance between the focal spot and the skin is 50% greater than in traditional configurations.

In X-Mind unity, the way leakage radiation is filtered (equivalent to 2mm A1 at 70kV) and controlled (less than 0.25mGy/h at 1m from focal spot) also gives maximum protection to the practitioner and personnel.

The control button fitted with a safety system and exposure time control pre-defined by microprocessor ensure that a constant dose is administered to the patient.

This technology avoids having to retake X-rays in the case of under or over-exposure.

## LOW DOSE



## INSTINCT FOR PROTECTION



### EFFECTIVE PROTECTION FOR MINIMAL EXPOSURE, FOR THE PATIENT AND FOR THE STAFF

The patient only receives the necessary dose adapted for their dental morphology, which protects them from unnecessary exposure.

When SOPIX inside has received enough energy to provide an exceptional image quality, it tells the X-Mind unity to stop the X-ray emission.



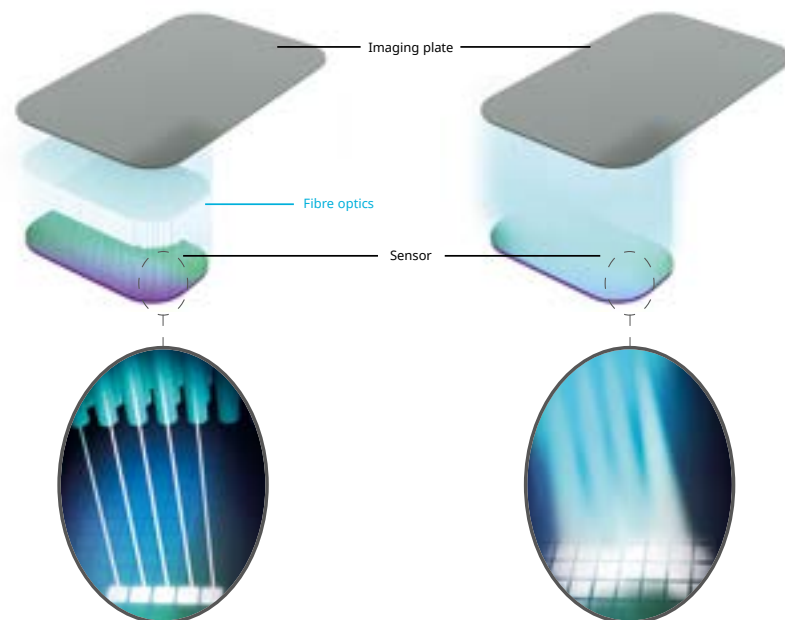


# SOPIX<sup>2</sup>SERIES

# STRIKING CONTRAST FOR A MORE RELIABLE DIAGNOSIS

WITH FIBRE - FIBER2PIXEL<sup>®</sup>

WITHOUT FIBRE



2FIBER  
PIXEL



SOPIX<sup>1</sup>



With proven quality and reliability, SOPIX produces a high quality image at an affordable price

SOPIX<sup>2</sup>



This sensor provides an exceptional image quality, using the most advanced technology

SOPIX<sup>inside</sup> SOPIX<sup>2</sup><sub>inside</sub>



This sensor is directly integrated into the X-Mind unity, resulting in a reduction of X-ray emissions

Ace  
technology

Available on all SOPIX<sup>®</sup> series sensors, the patented ACE<sup>®</sup> technology freezes the image during acquisition **to protect it from over-exposure.**  
**Acquire perfect image the first time and every time!**

## FAST AND EASY TO USE



Save time with a sensor that is **always ready to acquire**. The image is **displayed immediately**.  
**White side stripes** ensure high visibility of the sensor in the dark area of the mouth, to correctly position the X-ray tube perpendicular to the sensor.



## ACCESSORIES

ANTIBITING  
PROTECTION



SHEATHS FOR  
SOPIX SERIES SENSORS





# PSPiX<sup>2</sup>

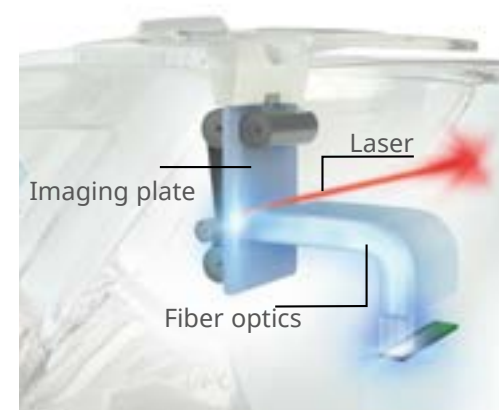
# POLYVALENCE AND EXTREME IMAGE PRECISION



## IMAGING PLATE SCANNER

- Most compact scanner on the scanner with elegant design
- Intuitive tactile screen
- Can be shared with up to 10 users
- High resolution for high quality diagnosis: 20 lp/mm
- Scanning time (size 2): 2.8s

## 2 FIBER PIXEL



Thanks to the use of broad spectrum optical microfibers, the different tooth anatomic structures, such as the bone, roots, pulp... are highlighted with extreme precision on the image.



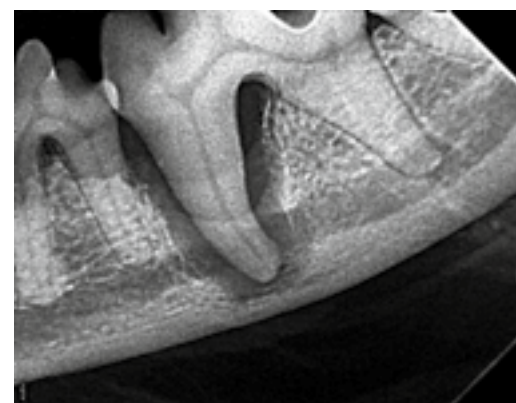
## LARGE RANGE OF THIN AND FLEXIBLE REUSABLE INTRA-ORAL PLATES



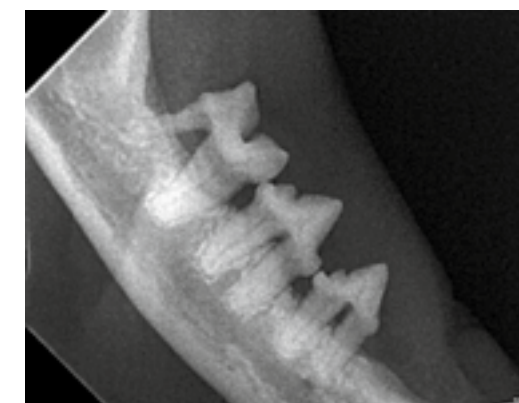




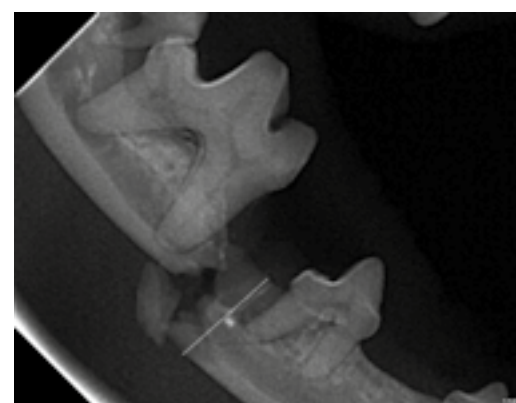
- Capture of videos and images
- Add comments
- Print, send by email and export of all datas
- Ergonomic and intuitive
- Multilingual software (available in 27 languages)
- Compatible with Windows and constantly updated packs
- User friendly database to store all patient



Courtesie of Dr Boutoille (France)



Courtesie of Dr Boutoille (France)



Courtesie of Dr Boutoille (France)

