

#whsterilization



video.wh.com

Now at
your dealer
or wh.com



Lina

the power of efficiency

Usability outside
Technology inside



lina

B type sterilizer, yet brilliant

B type sterilizer for best performance.

To prevent the transmission of infections, steam sterilization plays a significant role in the reprocessing of dental instruments. Thereby, efficiency and simplicity are crucial. The Lina sterilizer meets all these requirements and more: simple operation, ergonomic and functional design, appropriate sterilization cycles and upgradeable functions guarantee high efficiency leading to maximum results.



Interrupting the chain of infection.

B type sterilizer – for peace of mind on reprocessing and infection prevention.



B type sterilizer

with the best cycle times of its category.

Ease of use

for an unrivalled smooth user experience.

Unique upgradeability

for customising and modernising the device according to your needs.

Advanced traceability

for complete documentation.

Improved components Simplified work processes

Usability outside.

The Lina sterilizer is characterised by an effortless handling, ergonomic and functional design. Ideal to simplify the sterilization process and thus to ensure an efficient workflow in your practice.

The risk of infection is **actively minimised by sterilization!**
Because it's all about the safety of your patients, your staff and yourself.

How may you benefit from the **improved usability?**



Ease of use

- › The 3.5" touch screen display enables smooth operation.
- › The simplified user interface and menu structure support practices in all daily activities.



Optimal sterilization programs

- › The Eco B sterilization program reprocesses 0.5 kg in 25 minutes.
- › Lina can reprocess up to 6 kg of load to meet all requirements of dental clinics.
- › The B Universal 121°C cycle even allows the reprocessing of sensitive items, including porous such as surgical clothing.



Design and maintenance

- › The easily removable cover allows effortless access to the water tanks without tools. Filling is particularly easy with the integrated funnel.
- › Thanks to the high level of reliability, the service interval is set to 4,000 cycles or 5 years.
- › The design impresses with its ergonomic and functional shape and fits in anywhere thanks to modular feet and compact layout.

Technical concepts Realised visions

Technology inside.

Not only the outside, but also the technical expertise inside makes the difference. The Lina sterilizer is based on a sophisticated technical concept that offers future-oriented possibilities and significantly simplifies your workflow.

How may you benefit from the **advanced technology**?



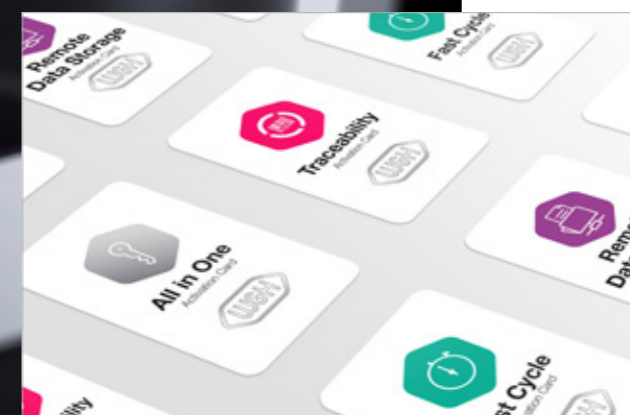
Enhanced traceability

- › The documentation is automatically saved via a high-capacity USB stick.
- › The barcode label printer provides additional support on traceability thanks to the opportunity to link cycle, sterilization package and patient.
- › The cycle report printer ensures adequate paper documentation of the cycle.



Advanced connectivity

- › The ioDent® system offers intelligent dental solutions and allows an advanced service support.
- › The W&H Steri App allows controlling and remote monitoring of the sterilizer. Moreover, cycle history back-up saved on smartphone ensures extra-safety.



Unique upgradeability

- › The Activation Code system is an innovative upgradeability tool. Activation Codes offer a tailored opportunity to enhance additional features that meet your practice needs and comply with future requirements. Effectively, for customising and upgrading your Lina sterilizer.

Use the **technological upgrades** to master all challenges with your sterilizer – today and tomorrow!

Unique upgradeability

Covering individual needs.

Needs and requirements may change. Prepare yourself now: with the Activation Code system, additional functions can be activated to meet your changing practice needs and future requirements.



Fast cycle

The “Fast cycle” feature enables sterilization of unwrapped instruments, including handpieces. For a quick cycle for in-between.



Remote data storage

The “Remote data storage” feature is the ideal addition for the digital cycle documentation. It offers the possibility to save cycles directly on PC.



Traceability

The “Traceability” feature enables user identification and load release confirmation. Identification is secured by a PIN directly on the Lina sterilizer and the W&H Steri App.



All in One

The “All in One” feature provides all benefits at once – and ultimately your sterilizer becomes an unattainable price-performance ratio.

Six steps to your customised sterilizer:

Step 1

Purchase the Activation Code of your choice by your local approved dental supplier.

Step 2

After you have received the related login code, go to **activation.wh.com**

Step 3

Enter this code along with serial number and model of your sterilizer.

Step 4

Your individual, secure Activation Code is generated.

Step 5

Enter this code in the menu of your Lina sterilizer.

Step 6

The feature is available.

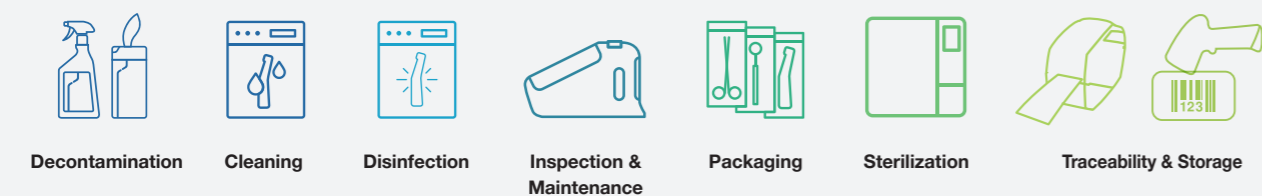
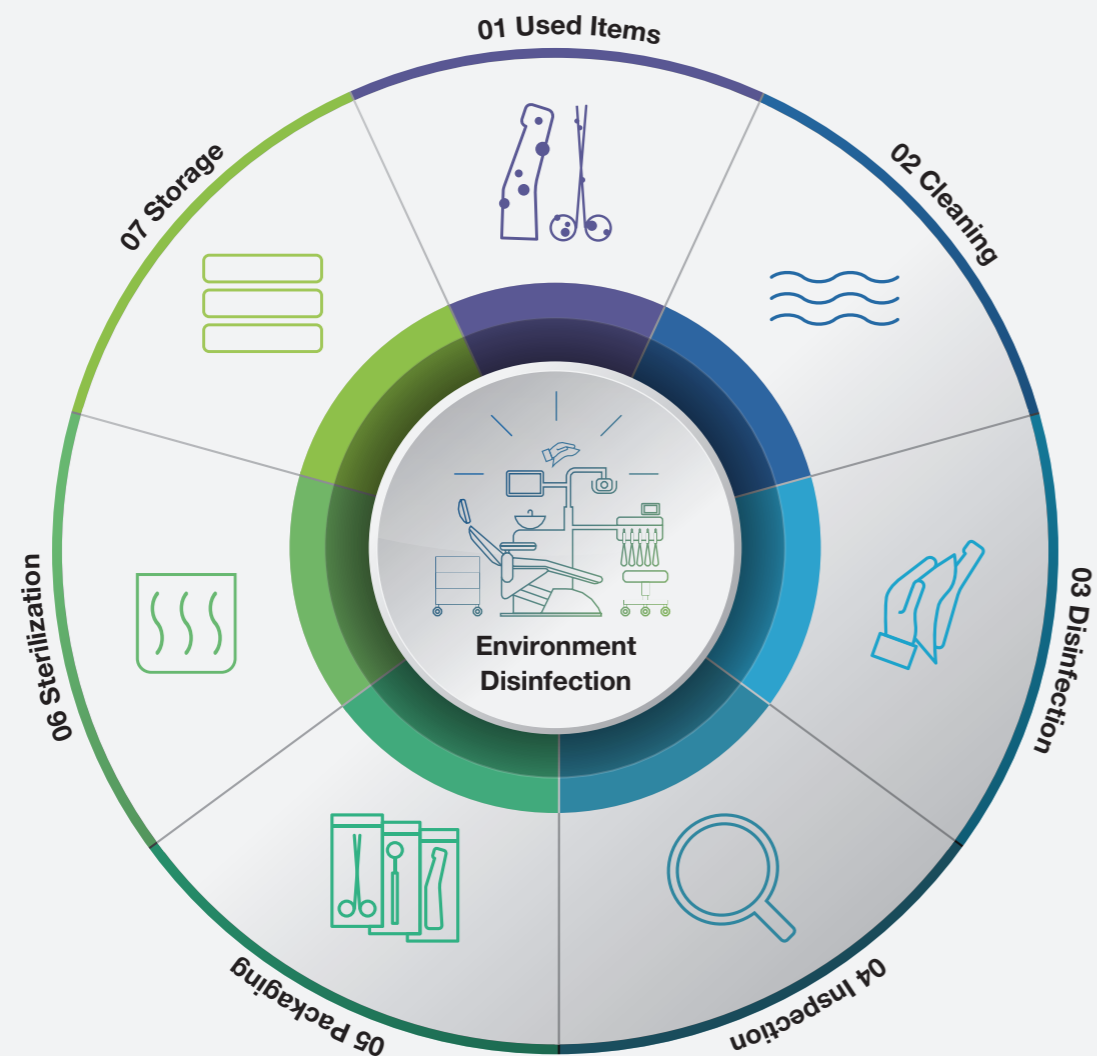


W&H AIMS Safety first!



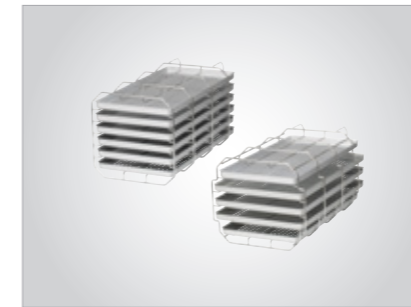
Hygiene is extremely important in the dental practice. W&H AIMS is here to help: with a wide product portfolio, fundamental knowledge and all relevant information at a glance.

For your safety and the safety of your patients. aims.wh.com



Appropriate accessories

W&H offers a wide range of accessories to optimise your workflow. Minor extras lead to major results. Work in the practice is easier and your team saves time.



Reversible rack

The best rack for your load:

- › for 3 large and 2 standard trays or 3 cassettes
- › for 6 trays or 3 cassettes



Barcode scanner

This enables you to scan labels into patient files.



Sprint

Print out cycle protocols on thermal paper with 10-year paper warranty.



Barcode label printer

The label printer can be connected to the sterilizer to print barcodes. In combination with the integrated data logger, it improves your traceability system. The label printer is a quick and easy tool to link the sterilization cycle with patient files.



Multidem

Multidem supplies demineralized water for steam generation and can be used for many conventional sterilizers and other daily activities such as instrument rinsing. As a result, it ensures consistent and optimised performance, thereby extending the service life of your sterilizer.



Seal² and SealVal²

The W&H sealer creates a 12 mm wide seal in just two seconds with no risk of burning the sterilization package. The absolutely hermetic and strong protection of the sterile goods from environmental influences guarantees continuing sterility.

Technical data

Sterilization cycle:		B Universal 134		B Prion 134		B Universal 121		S naked 134 (optional)	
Temperature:		134°C		134°C		121°C		134°C	
Holding time (minutes):		4'		18' 30"		20' 30"		4'	
Total cycle duration (minutes) including complete drying:		Automatic from	Typical load	Automatic from	Typical load	Automatic from		Automatic from	
	Lina 17	25'–49'	45'	40'–64'	60'	63'–71'		20'–26'	
	Lina 22 (220 V)	28'–52'	48'	43'–67'	63'	65'–74'		21'–27'	
	Lina 22 (110 V)	33'–63'	55'	47'–77'	69'	73'–82'		28'–35'	
Lina 17 loads:		max. 3.5–5.5(1) kg/typical 2 kg/max. porous 0.5–1.5(2) kg						max. 4 kg unwrapped	
Lina 22 loads:		max. 4–6(3) kg/typical 2 kg/max. porous 0.5–2(4) kg						max. 4 kg unwrapped	
Lina 17/22 containers:		max. 6 kg							
Test cycles:		Helix/Bowie and Dick/Vacuum							
Items supplied with reversible rack, 3 aluminium trays, drain hose, tray holder, 8 GB USB stick, door opening tool, factory test									

- (1) Duration reported in the table refers to 3.5 kg. It is possible to sterilize up to 5.5 kg by drying time extension.
 (2) Duration reported in the table refers to 0.5 kg. It is possible to sterilize up to 1.5 kg by drying time extension.
 (3) Duration reported in the table refers to 4.0 kg. It is possible to sterilize up to 6.0 kg by drying time extension.
 (4) Duration reported in the table refers to 0.5 kg. It is possible to sterilize up to 2.0 kg by drying time extension.



Trade name:	Lina RIK-117		Lina RIK-122	
Chamber size:	17 l		22 l	
Power supply:	200–240 V AC; 50 Hz or 60 Hz; 10 A single phase		100–125 V AC; 50 Hz/60 Hz; 12 A single phase	
			200–240 V AC; 50 Hz or 60 Hz; 10 A single phase	
Power consumption:	2.0–2.4 kW		110 V: 1.2–1.5 kW	
			220 V: 2.0–2.4 kW	
Overall dimension (w × h × d):	465 × 452 × 646 mm			
Weight (empty):	40 kg		42 kg	
Main/used water tanks:	4.8/4.8 l			
Working range:	7 to 10 cycles			
Usable space in chamber (w × h × d) ⁽¹⁾ :	195 × 195 × 312 mm		195 × 195 × 400 mm	
Connection types:	1 USB port in the front (additional 1 in the rear as option), automatic water filling kit (optional)			

- (1) Usable space is referred to standard rack configuration

Lina sterilizers were designed, certified and validated with the most stringent directives and standards:		
2017/745 Medical Device Regulation	IEC 61326-1 Electromagnetic compatibility	IEC 61770 Electric appliances connected to the water mains
2012/19/EU Waste Electrical and Electronic Equipment	IEC 61010-1 Safety requirements	EN 13060 Small steam sterilizers
2014/68/EU Pressure Equipment Directive	IEC 61010-2-040 Specific requirements for steam sterilizer	› The sterilizer can be validated according to EN ISO 17665-1

Manufacturer:

W&H Sterilization Srl.
 Via Bolgara, 2
 24060 Brusaporto (BG), Italy
 t +39 035-66 63 000
 f +39 035-50 96 988
 office.sterilization@wh.com
 wh.com